

\$399,999 - 85 Brickyard Drive, Stony Plain

MLS® #E4465104

\$399,999

3 Bedroom, 2.50 Bathroom, 1,473 sqft
Single Family on 0.00 Acres

Brickyard, Stony Plain, AB

IMMEDIATE POSSESSION INCLUDING LANDSCAPING/DECK AND DOUBLE DETACHED GARAGE

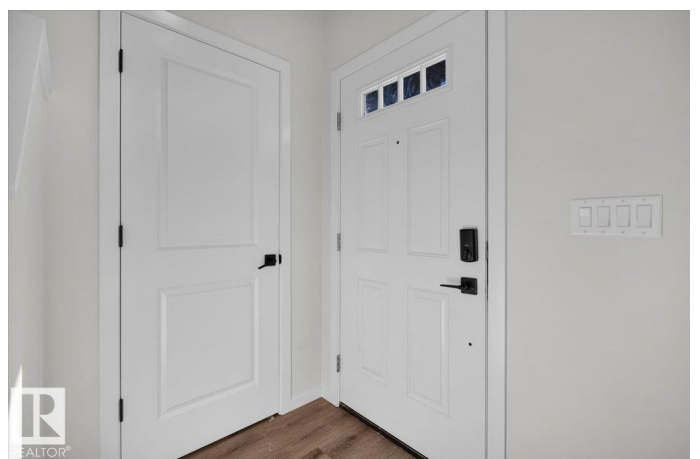
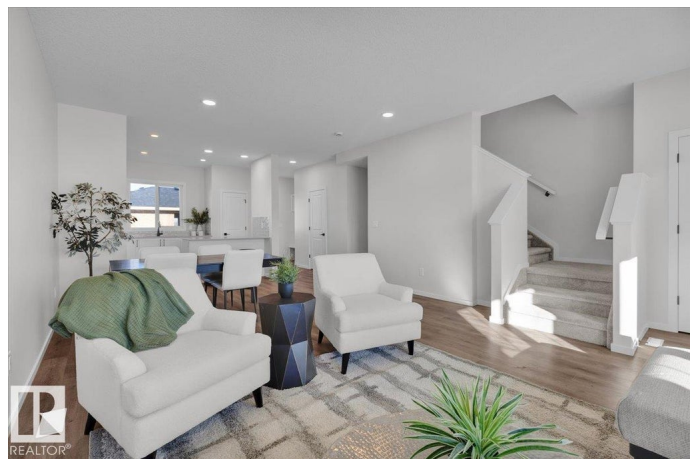
5 Things to Love about this new Alquinn Home in Brickyard:

- 1) **Brand-New Build** – Enjoy the benefits of a modern 2-storey design with full landscaping, a spacious deck, and a double detached garage.
- 2) **Open-Concept Living** – The bright main floor seamlessly connects living, dining, and kitchen spaces, featuring an electric fireplace and a stylish kitchen with a breakfast bar.
- 3) **Thoughtful Layout** – Includes a convenient 2pc bath on the main level, plus upper-level laundry for ultimate ease.
- 4) **Private Retreat** – The primary suite boasts a walk-in closet and a luxurious 4pc ensuite, complemented by two additional bedrooms and another 4pc bath upstairs.
- 5) **Prime Location** – Situated in Brickyard, across from the rec centre and close to parks, playgrounds, and schools – perfect for active lifestyles. *Photos are representative*

Built in 2025

Essential Information

MLS® #	E4465104
Price	\$399,999
Bedrooms	3
Bathrooms	2.50



Full Baths	2
Half Baths	1
Square Footage	1,473
Acres	0.00
Year Built	2025
Type	Single Family
Sub-Type	Residential Attached
Style	2 Storey
Status	Active

Community Information

Address	85 Brickyard Drive
Area	Stony Plain
Subdivision	Brickyard
City	Stony Plain
County	ALBERTA
Province	AB
Postal Code	T7Z 0P2

Amenities

Amenities	Ceiling 9 ft., Deck, Exterior Walls- 2"x6", No Animal Home, No Smoking Home
Parking	Double Garage Detached

Interior

Interior Features	ensuite bathroom
Appliances	Dishwasher-Built-In, Garage Control, Garage Opener, Microwave Hood Fan, Refrigerator, Stove-Electric
Heating	Forced Air-1, Natural Gas
Fireplace	Yes
Fireplaces	Insert
Stories	2
Has Basement	Yes
Basement	Full, Unfinished

Exterior

Exterior	Wood, Vinyl
Exterior Features	Back Lane, Landscaped, Park/Reserve, Playground Nearby, Schools, Shopping Nearby

Roof	Asphalt Shingles
Construction	Wood, Vinyl
Foundation	Concrete Perimeter

Additional Information

Date Listed	November 7th, 2025
Days on Market	2
Zoning	Zone 91

DATA IS DEEMED RELIABLE BUT IS NOT GUARANTEED ACCURATE BY THE REALTORS® ASSOCIATION OF EDMONTON. COPYRIGHT 2025 BY THE REALTORS® ASSOCIATION OF EDMONTON. ALL RIGHTS RESERVED. Trademarks are owned or controlled by the Canadian Real Estate Association (CREA) and identify real estate professionals who are members of CREA (REALTOR®, REALTORS®) and/or the quality of services they provide (MLS®, Multiple Listing Service®)

Listing information last updated on November 9th, 2025 at 9:02am MST