

\$485,000 - 3362 Orchards Link, Edmonton

MLS® #E4457320

\$485,000

3 Bedroom, 2.50 Bathroom, 1,540 sqft

Single Family on 0.00 Acres

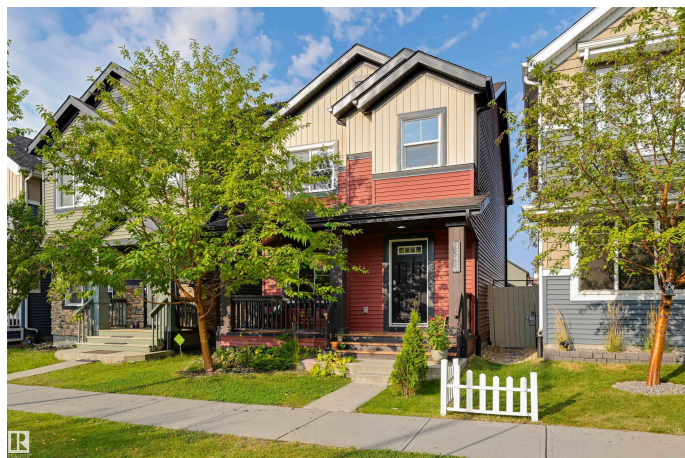
The Orchards At Ellerslie, Edmonton, AB

Welcome to this beautiful 2-storey home in the desirable Orchards at Ellerslie! With 3 bedrooms + 3 bathrooms, this home is thoughtfully designed for your family! With a spacious living room that flows seamlessly into the kitchen, featuring stylish backsplash, you have plenty of room to meal prep and cook for loved ones. Your comfortable living room is a great place to unwind at the end of the day. Enjoy the comfort of central A/C. Up the stairs, you can enjoy cozy carpet that spreads throughout two bedrooms and your spacious primary suite, which includes a large walk-in California Closet and a 4-piece ensuite for your privacy! Your fully fenced backyard with a double detached garage includes attic storage, perfect for storing seasonal items! Located close to walking paths, green spaces, parks, schools, dining, and shopping, this home has everything you need!

Built in 2016

Essential Information

MLS® #	E4457320
Price	\$485,000
Bedrooms	3
Bathrooms	2.50
Full Baths	2
Half Baths	1



Square Footage	1,540
Acres	0.00
Year Built	2016
Type	Single Family
Sub-Type	Detached Single Family
Style	2 Storey
Status	Active

Community Information

Address	3362 Orchards Link
Area	Edmonton
Subdivision	The Orchards At Ellerslie
City	Edmonton
County	ALBERTA
Province	AB
Postal Code	T6X 2B4

Amenities

Amenities	Off Street Parking, On Street Parking, Air Conditioner, Hot Water Natural Gas, No Smoking Home, Vinyl Windows
Parking	Double Garage Detached

Interior

Interior Features	ensuite bathroom
Appliances	Air Conditioning-Central, Dishwasher-Built-In, Dryer, Freezer, Garage Control, Garage Opener, Microwave Hood Fan, Refrigerator, Stove-Electric, Washer, Window Coverings
Heating	Forced Air-1, Natural Gas
Stories	2
Has Basement	Yes
Basement	Full, Unfinished

Exterior

Exterior	Wood, Vinyl
Exterior Features	Airport Nearby, Golf Nearby, Playground Nearby, Public Transportation, Schools, Shopping Nearby
Roof	Asphalt Shingles
Construction	Wood, Vinyl
Foundation	Concrete Perimeter

School Information

Elementary	Jan Reimer School
Middle	Jan Reimer School
High	J. Percy Page School

Additional Information

Date Listed	September 11th, 2025
Zoning	Zone 53
HOA Fees	450
HOA Fees Freq.	Annually

DATA IS DEEMED RELIABLE BUT IS NOT GUARANTEED ACCURATE BY THE REALTORS® ASSOCIATION OF EDMONTON. COPYRIGHT 2025 BY THE REALTORS® ASSOCIATION OF EDMONTON. ALL RIGHTS RESERVED.Trademarks are owned or controlled by the Canadian Real Estate Association (CREA) and identify real estate professionals who are members of CREA (REALTOR®, REALTORS®) and/or the quality of services they provide (MLS®, Multiple Listing Service®)

Listing information last updated on September 11th, 2025 at 8:47pm MDT