

## \$435,000 - 6916 151 Avenue, Edmonton

MLS® #E4457241

**\$435,000**

5 Bedroom, 2.50 Bathroom, 1,189 sqft

Single Family on 0.00 Acres

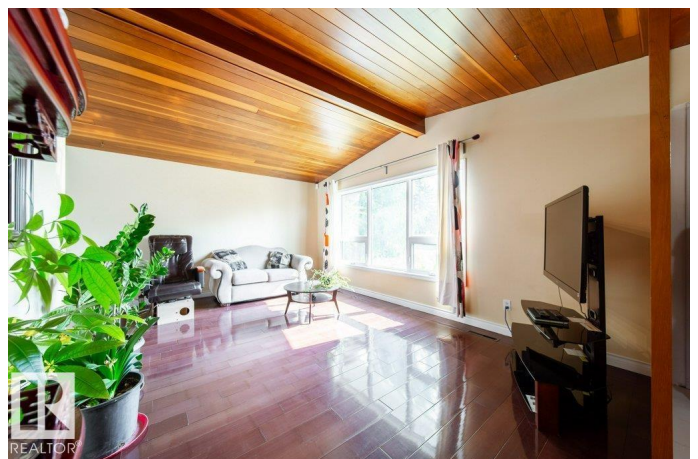
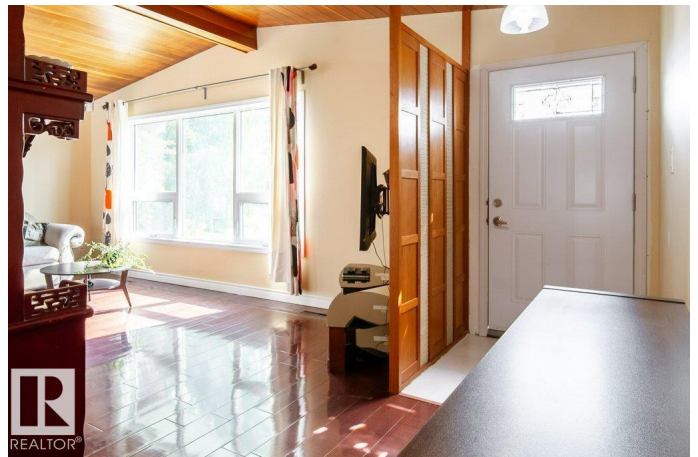
Kilkenny, Edmonton, AB

Lovely family bungalow in the heart of Kilkenny! Located on a quiet street and on a 6500 sqft lot! Just a few minutes away from Londonderry Mall, M.E Lazerte School, plus easy access to transit and all your amenities. This spacious 5 bedroom, 2.5 bathroom home is perfect for the 1st time home buyer or families looking for room to grow. Recent upgrades include all new windows & doors ('19), shingles ('23), sidewalk ('23), and garage doors ('18). Gorgeous vaulted cedar ceilings throughout the main living area and large south facing new windows provide ample natural light. Updated kitchen with stainless steel appliances (new fridge & double oven!). Spacious primary bedroom with dual closets and 2 pc ensuite, 2 additional bedrooms on the main are a great size. Finished basement offers 2 more bedrooms, 3 pc bathroom, and large rec room. Massive backyard is fenced, featuring fruit trees, garden, oversized double garage, and patio.

Built in 1969

### Essential Information

MLS® #	E4457241
Price	\$435,000
Bedrooms	5
Bathrooms	2.50



Full Baths	2
Half Baths	1
Square Footage	1,189
Acres	0.00
Year Built	1969
Type	Single Family
Sub-Type	Detached Single Family
Style	Bungalow
Status	Active

### Community Information

Address	6916 151 Avenue
Area	Edmonton
Subdivision	Kilkenny
City	Edmonton
County	ALBERTA
Province	AB
Postal Code	T5C 2Y7

### Amenities

Amenities	Vaulted Ceiling, Vinyl Windows
Parking	Double Garage Detached, Over Sized

### Interior

Interior Features	ensuite bathroom
Appliances	Dishwasher-Built-In, Dryer, Garage Control, Garage Opener, Hood Fan, Refrigerator, Storage Shed, Stove-Electric, Washer, Window Coverings
Heating	Forced Air-1, Natural Gas
Stories	2
Has Basement	Yes
Basement	Full, Finished

### Exterior

Exterior	Wood, Stucco, Vinyl
Exterior Features	Fenced, Flat Site, Fruit Trees/Shrubs, Schools, Shopping Nearby
Roof	Asphalt Shingles
Construction	Wood, Stucco, Vinyl
Foundation	Concrete Perimeter

### Additional Information

Date Listed September 11th, 2025

Days on Market 1

Zoning Zone 02

DATA IS DEEMED RELIABLE BUT IS NOT GUARANTEED ACCURATE BY THE REALTORS® ASSOCIATION OF EDMONTON. COPYRIGHT 2025 BY THE REALTORS® ASSOCIATION OF EDMONTON. ALL RIGHTS RESERVED. Trademarks are owned or controlled by the Canadian Real Estate Association (CREA) and identify real estate professionals who are members of CREA (REALTOR®, REALTORS®) and/or the quality of services they provide (MLS®, Multiple Listing Service®)

Listing information last updated on September 11th, 2025 at 11:47pm MDT