

\$209,900 - 117 508 Albany Way, Edmonton

MLS® #E4457224

\$209,900

2 Bedroom, 2.00 Bathroom, 791 sqft

Condo / Townhouse on 0.00 Acres

Albany, Edmonton, AB

Welcome to Elements at Albany! This spacious and bright 2-bedroom, 2-bathroom condo with 2 titled parking stalls offers a fantastic open-concept layout designed for comfortable living. Step through the front door and into a well-appointed kitchen with plenty of cabinetry and counter space that flows seamlessly into the dining and living areas. The open layout makes entertaining a breeze, while large windows fill the space with natural light. Patio doors off the dining room lead to your private balcony. The primary bedroom features a walk-in closet and a 4-piece ensuite. The second bedroom is located on the opposite side of the unit with a nearby 4-piece bathroom for convenience. In-suite laundry adds practicality and ease to your daily routine. There are two titled parking stalls, making parking simple for you and your guests. Located in a quiet, well-managed complex close to walking paths, parks, schools, shopping, restaurants, and all essential amenities.

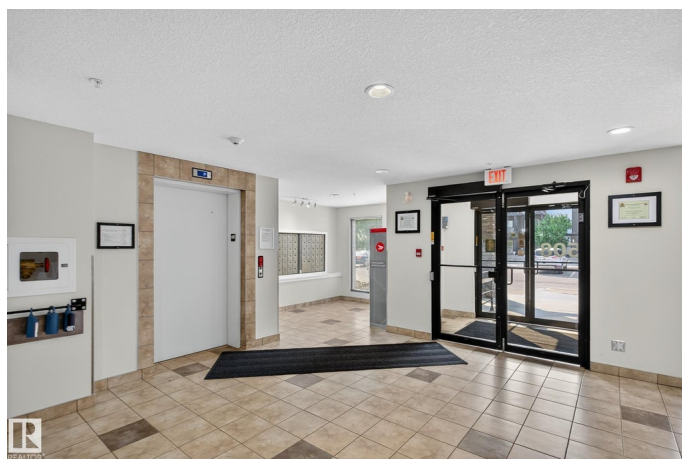
Built in 2013

Essential Information

MLS® # E4457224

Price \$209,900

Bedrooms 2



Bathrooms	2.00
Full Baths	2
Square Footage	791
Acres	0.00
Year Built	2013
Type	Condo / Townhouse
Sub-Type	Lowrise Apartment
Style	Single Level Apartment
Status	Active

Community Information

Address	117 508 Albany Way
Area	Edmonton
Subdivision	Albany
City	Edmonton
County	ALBERTA
Province	AB
Postal Code	T6V 0L1

Amenities

Amenities	Off Street Parking, Air Conditioner, Detectors Smoke, Intercom
Parking	Stall, Underground

Interior

Interior Features	ensuite bathroom
Appliances	Dishwasher-Built-In, Dryer, Microwave Hood Fan, Refrigerator, Stove-Electric, Washer, Window Coverings
Heating	Baseboard, Natural Gas
# of Stories	4
Stories	1
Has Basement	Yes
Basement	None, No Basement

Exterior

Exterior	Wood, Vinyl
Exterior Features	Landscaped, Playground Nearby, Public Transportation, Schools, Shopping Nearby
Roof	Asphalt Shingles
Construction	Wood, Vinyl

Foundation Concrete Perimeter

Additional Information

Date Listed September 11th, 2025
Days on Market 1
Zoning Zone 27
Condo Fee \$427

DATA IS DEEMED RELIABLE BUT IS NOT GUARANTEED ACCURATE BY THE REALTORS® ASSOCIATION OF EDMONTON. COPYRIGHT 2025 BY THE REALTORS® ASSOCIATION OF EDMONTON. ALL RIGHTS RESERVED.Trademarks are owned or controlled by the Canadian Real Estate Association (CREA) and identify real estate professionals who are members of CREA (REALTOR®, REALTORS®) and/or the quality of services they provide (MLS®, Multiple Listing Service®)
Listing information last updated on September 11th, 2025 at 11:17pm MDT