

# \$619,899 - 7941 83 Avenue, Edmonton

MLS® #E4457192

**\$619,899**

4 Bedroom, 3.50 Bathroom, 1,819 sqft  
Single Family on 0.00 Acres

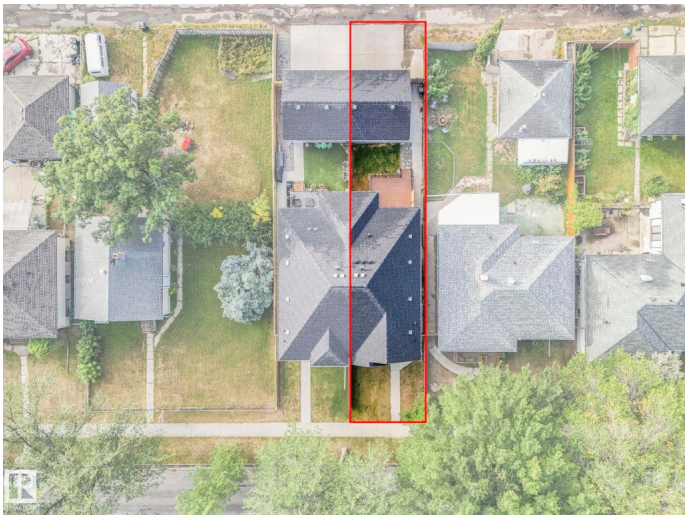
Idylwylde, Edmonton, AB

Welcome to Idylwylde! This spacious half duplex offers over 1,800 sq ft plus a fully finished basement with a separate entrance. The main floor features 9â€™™ ceilings, an open layout, 3 bedrooms, 2.5 baths, and modern finishes throughout. The bright kitchen flows into a generous living and dining space, perfect for family living or entertaining. Upstairs, find a comfortable primary bedroom along with two additional bedrooms. The basement includes 1 bedroom, 1 bath, its own furnace, and private entry. Enjoy year-round comfort with air conditioning and dual furnaces. A detached double garage completes the property. Located in desirable Idylwylde, youâ€™™re close to shopping, transit, Whyte Ave, and Mill Creek Ravine.

Built in 2014

## Essential Information

MLS® #	E4457192
Price	\$619,899
Bedrooms	4
Bathrooms	3.50
Full Baths	3
Half Baths	1
Square Footage	1,819
Acres	0.00



Year Built	2014
Type	Single Family
Sub-Type	Half Duplex
Style	2 Storey
Status	Active

### Community Information

Address	7941 83 Avenue
Area	Edmonton
Subdivision	Idylwylde
City	Edmonton
County	ALBERTA
Province	AB
Postal Code	T6C 1A5

### Amenities

Amenities	Off Street Parking, On Street Parking, Air Conditioner, Ceiling 9 ft., Deck, Detectors Smoke, Front Porch, See Remarks
Parking	Double Garage Detached

### Interior

Interior Features	ensuite bathroom
Appliances	Dishwasher-Built-In, Garage Control, Window Coverings, See Remarks, Dryer-Two, Refrigerators-Two, Stoves-Two, Washers-Two, Microwave Hood Fan-Two
Heating	Forced Air-2, Natural Gas
Stories	3
Has Suite	Yes
Has Basement	Yes
Basement	Full, Finished

### Exterior

Exterior	Wood, Vinyl
Exterior Features	Back Lane, Fenced, Landscaped, Playground Nearby, Schools, Shopping Nearby, See Remarks
Roof	Asphalt Shingles
Construction	Wood, Vinyl
Foundation	Concrete Perimeter

### Additional Information

Date Listed September 11th, 2025

Days on Market 1

Zoning Zone 18

DATA IS DEEMED RELIABLE BUT IS NOT GUARANTEED ACCURATE BY THE REALTORS® ASSOCIATION OF EDMONTON. COPYRIGHT 2025 BY THE REALTORS® ASSOCIATION OF EDMONTON. ALL RIGHTS RESERVED. Trademarks are owned or controlled by the Canadian Real Estate Association (CREA) and identify real estate professionals who are members of CREA (REALTOR®, REALTORS®) and/or the quality of services they provide (MLS®, Multiple Listing Service®)

Listing information last updated on September 12th, 2025 at 1:32am MDT