

\$389,900 - 9821 159 Street, Edmonton

MLS® #E4457110

\$389,900

4 Bedroom, 2.00 Bathroom, 1,024 sqft

Single Family on 0.00 Acres

Glenwood (Edmonton), Edmonton, AB

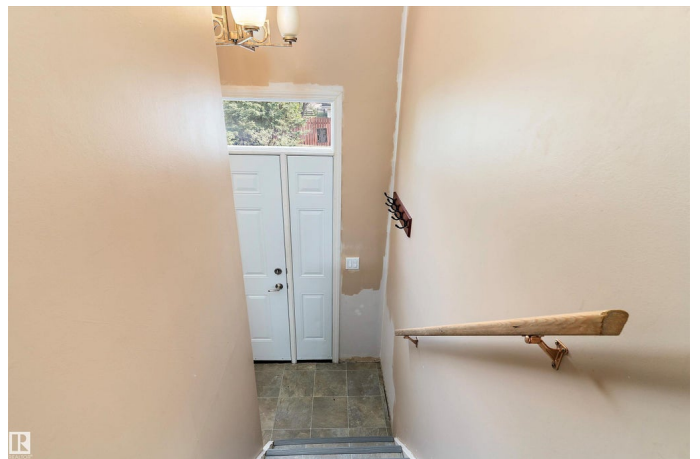
Welcome to this charming bi-level in the heart of Glenwood, offering over 1,024 sq. ft. of comfortable living space on the main floor plus another 894 sq. ft. in the fully finished basement. This versatile home features four bdrms & two full baths, making it ideal for families or investors. The main level showcases a spacious living room w/an open flow to the dining area, along with a functional kitchen ready for your personal touch. Two bdrms are located upstairs, while the basement adds two additional bdrms, a large family rm & convenient dual entrances at the front & back of the home. Outside, enjoy a full-sized lot complete with a 24 x 26 double detached garage, fenced yard & patio space for outdoor living. Garage shingles replaced in August 2025. Built in 1975, the home sits on a rectangular west-facing lot w/lane access and is surrounded by schools, shopping & transit. With 2024 taxes of \$3321.73 and zoning of RF1, this property combines opportunity & value in a sought-after west Edmonton location.

Built in 1975

Essential Information

MLS® # E4457110

Price \$389,900



Bedrooms	4
Bathrooms	2.00
Full Baths	2
Square Footage	1,024
Acres	0.00
Year Built	1975
Type	Single Family
Sub-Type	Detached Single Family
Style	Bi-Level
Status	Active

Community Information

Address	9821 159 Street
Area	Edmonton
Subdivision	Glenwood (Edmonton)
City	Edmonton
County	ALBERTA
Province	AB
Postal Code	T5P 2Z6

Amenities

Amenities	Deck
Parking	Double Garage Detached

Interior

Appliances	Dishwasher-Built-In, Dryer, Garage Control, Garage Opener, Refrigerator, Stove-Electric, Washer
Heating	Forced Air-1, Natural Gas
Stories	2
Has Basement	Yes
Basement	Full, Finished

Exterior

Exterior	Wood, Vinyl
Exterior Features	Back Lane, Fenced, Landscaped, Playground Nearby, Schools, Shopping Nearby
Roof	Asphalt Shingles
Construction	Wood, Vinyl
Foundation	Concrete Perimeter

Additional Information

Date Listed September 10th, 2025
Days on Market 2
Zoning Zone 22

DATA IS DEEMED RELIABLE BUT IS NOT GUARANTEED ACCURATE BY THE REALTORS® ASSOCIATION OF EDMONTON. COPYRIGHT 2025 BY THE REALTORS® ASSOCIATION OF EDMONTON. ALL RIGHTS RESERVED.Trademarks are owned or controlled by the Canadian Real Estate Association (CREA) and identify real estate professionals who are members of CREA (REALTOR®, REALTORS®) and/or the quality of services they provide (MLS®, Multiple Listing Service®)
Listing information last updated on September 12th, 2025 at 4:02am MDT