

\$349,000 - 11 4020 21 Street, Edmonton

MLS® #E4456946

\$349,000

2 Bedroom, 3.50 Bathroom, 1,225 sqft
Condo / Townhouse on 0.00 Acres

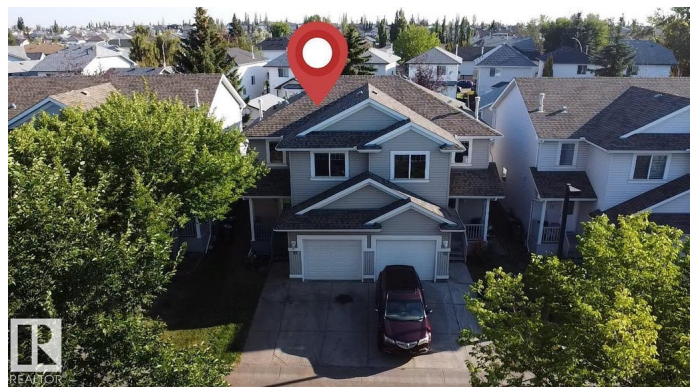
Larkspur, Edmonton, AB

Welcome to this fantastic half-duplex located in the quiet, family-friendly neighbourhood of Larkspur. The main floor offers an inviting layout with a bright living room, dining area, spacious kitchen with island, and a convenient 2-piece bathroom. Upstairs you'll find two generously sized bedrooms, each with a walk-in closet, plus two full bathrooms, including a private ensuite for the primary bedroom. The FULLY FINISHED BASEMENT adds even more living space with a large recreation room, a full bathroom, and laundry for added convenience. Enjoy the attached garage, as well as a backyard complete with a deck that's perfect for summer BBQs. With huge windows throughout, this home is filled with natural sunlight, giving it an airy and spacious feel. Located within walking distance to shopping on 17th Street and with easy access to Whitemud Drive, this is perfect blend of convenience and comfort.

Built in 2002

Essential Information

MLS® #	E4456946
Price	\$349,000
Bedrooms	2
Bathrooms	3.50
Full Baths	3



Half Baths	1
Square Footage	1,225
Acres	0.00
Year Built	2002
Type	Condo / Townhouse
Sub-Type	Half Duplex
Style	2 Storey
Status	Active

Community Information

Address	11 4020 21 Street
Area	Edmonton
Subdivision	Larkspur
City	Edmonton
County	ALBERTA
Province	AB
Postal Code	T6T 1T8

Amenities

Amenities	Deck, No Animal Home, No Smoking Home, Parking-Visitor
Parking	Single Garage Attached

Interior

Interior Features	ensuite bathroom
Appliances	Dishwasher-Built-In, Dryer, Hood Fan, Refrigerator, Stove-Electric, Washer, Window Coverings
Heating	Forced Air-1, Natural Gas
Stories	3
Has Basement	Yes
Basement	Full, Finished

Exterior

Exterior	Wood, Vinyl
Exterior Features	Back Lane, Fenced, Flat Site, Fruit Trees/Shrubs, Playground Nearby, Schools, Shopping Nearby
Roof	Asphalt Shingles
Construction	Wood, Vinyl
Foundation	Concrete Perimeter

School Information

Elementary	Velma E. Baker School
Middle	Rosslyn School
High	McNally School

Additional Information

Date Listed	September 9th, 2025
Days on Market	3
Zoning	Zone 30
Condo Fee	\$251

DATA IS DEEMED RELIABLE BUT IS NOT GUARANTEED ACCURATE BY THE REALTORS® ASSOCIATION OF EDMONTON. COPYRIGHT 2025 BY THE REALTORS® ASSOCIATION OF EDMONTON. ALL RIGHTS RESERVED. Trademarks are owned or controlled by the Canadian Real Estate Association (CREA) and identify real estate professionals who are members of CREA (REALTOR®, REALTORS®) and/or the quality of services they provide (MLS®, Multiple Listing Service®)

Listing information last updated on September 12th, 2025 at 3:48pm MDT