

Courtesy Of Raelee Stagliano Of RE/MAX River City

\$415,000 - 9833 83 Avenue, Edmonton

MLS® #E4456902

\$415,000

2 Bedroom, 1.00 Bathroom, 662 sqft

Single Family on 0.00 Acres

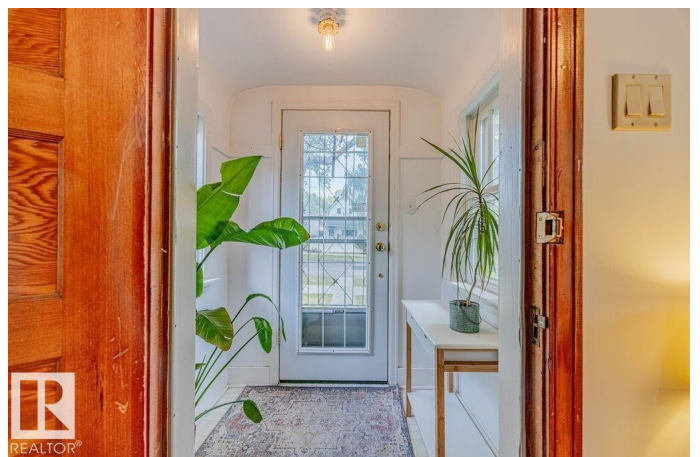
Strathcona, Edmonton, AB

Welcome to this character-filled home in one of Edmonton's most sought-after neighborhoods. Strathcona living means easy River Valley access and an abundance of walkable local amenities. Bursting with personality and lovingly maintained, this home offers a warm, inviting atmosphere. Original hardwood floors anchor the spacious living room, leading into a bright eat-in kitchen with soaring ceilings and charming original cabinetry. Find peace of mind in the recent upgrades, including a new garage door, windows, HWT and furnace—all designed for year-round comfort and efficiency. Outside, enjoy the mature trees, private fenced yard, single-car garage, and even RV parking. With its efficient layout, cozy living spaces, and unbeatable location, this home truly packs a punch. Experience the best of Strathcona's Farmers Market, tree-lined streets, local shops, top restaurants, and Mill Creek Ravine—right at your doorstep.

Built in 1945

Essential Information

MLS® #	E4456902
Price	\$415,000
Bedrooms	2
Bathrooms	1.00



Full Baths	1
Square Footage	662
Acres	0.00
Year Built	1945
Type	Single Family
Sub-Type	Detached Single Family
Style	Bungalow
Status	Active

Community Information

Address	9833 83 Avenue
Area	Edmonton
Subdivision	Strathcona
City	Edmonton
County	ALBERTA
Province	AB
Postal Code	T6E 2B8

Amenities

Amenities	On Street Parking, Detectors Smoke, Front Porch, No Animal Home, No Smoking Home, Vinyl Windows
Parking	Single Garage Detached

Interior

Appliances	Dishwasher-Portable, Dryer, Freezer, Garage Control, Garage Opener, Refrigerator, Stove-Gas, Washer
Heating	Forced Air-1, Natural Gas
Stories	1
Has Basement	Yes
Basement	Full, Partially Finished

Exterior

Exterior	Wood, Stucco
Exterior Features	Fenced, Flat Site, Public Transportation, Schools, Shopping Nearby
Roof	Asphalt Shingles
Construction	Wood, Stucco
Foundation	Concrete Perimeter

School Information

Elementary Garneau School/King Edward
High Strathcona High

Additional Information

Date Listed September 9th, 2025
Days on Market 4
Zoning Zone 15

DATA IS DEEMED RELIABLE BUT IS NOT GUARANTEED ACCURATE BY THE REALTORS® ASSOCIATION OF EDMONTON. COPYRIGHT 2025 BY THE REALTORS® ASSOCIATION OF EDMONTON. ALL RIGHTS RESERVED. Trademarks are owned or controlled by the Canadian Real Estate Association (CREA) and identify real estate professionals who are members of CREA (REALTOR®, REALTORS®) and/or the quality of services they provide (MLS®, Multiple Listing Service®)

Listing information last updated on September 13th, 2025 at 3:02am MDT