

\$259,000 - 13003 124 Street, Edmonton

MLS® #E4455589

\$259,000

3 Bedroom, 1.00 Bathroom, 830 sqft

Single Family on 0.00 Acres

Calder, Edmonton, AB

Massive CORNER LOT (125 ft x 50 ft) in CALDER community, close to parks, shopping, public transportation, easy access to Yellowhead Trail and Downtown! LOT DIMENSIONS - 125 ft x 50 ft, within the chain link fence. HUGE Garage is 27 ft x 28 ft and 14 ft in height. All new sidewalks and curbing have just been completed in the neighborhood. Brand new large shed included.

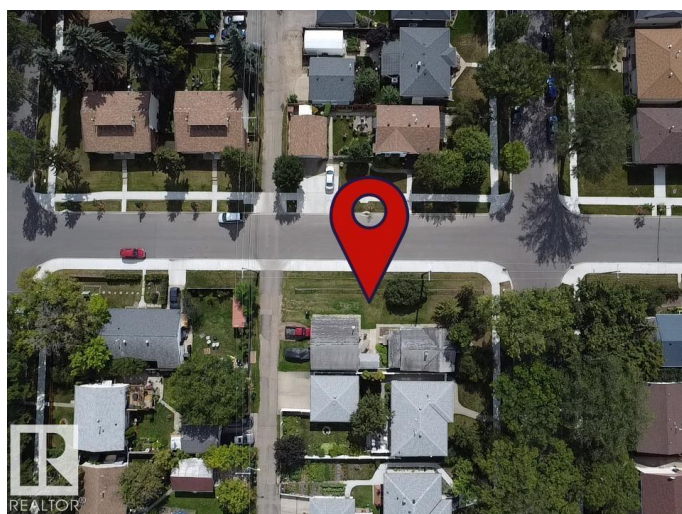
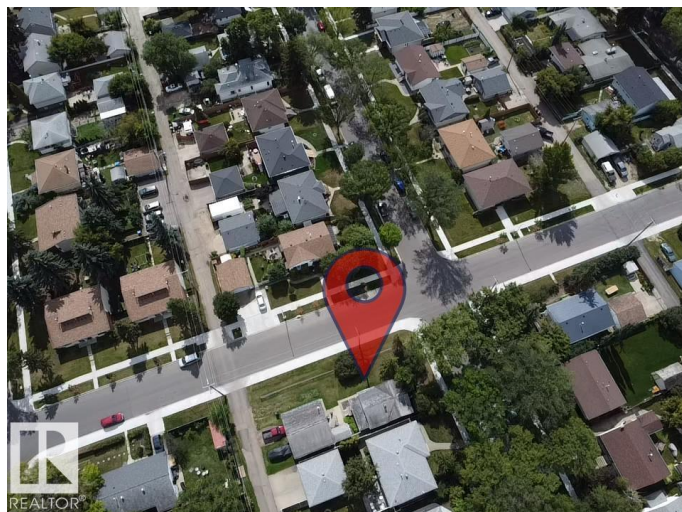
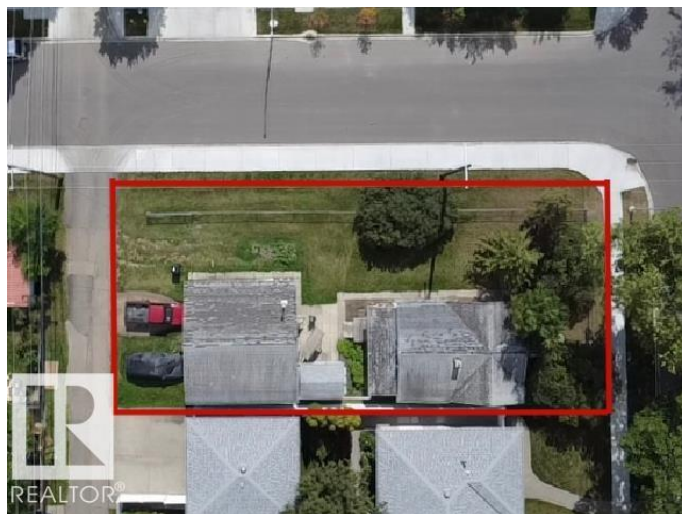
Built in 1920

Essential Information

MLS® #	E4455589
Price	\$259,000
Bedrooms	3
Bathrooms	1.00
Full Baths	1
Square Footage	830
Acres	0.00
Year Built	1920
Type	Single Family
Sub-Type	Detached Single Family
Style	Bungalow
Status	Active

Community Information

Address	13003 124 Street
Area	Edmonton



Subdivision	Calder
City	Edmonton
County	ALBERTA
Province	AB
Postal Code	T5L 0L8

Amenities

Amenities	Front Porch, Infill Property
Parking	Double Garage Detached

Interior

Appliances	Dryer, Garage Control, Garage Opener, Refrigerator, Storage Shed, Stove-Electric, Washer, Window Coverings
Heating	Forced Air-1, Natural Gas
Stories	1
Has Basement	Yes
Basement	Partial, Unfinished

Exterior

Exterior	Wood, Stucco
Exterior Features	Flat Site, Playground Nearby, Public Transportation, Schools, Shopping Nearby
Roof	Asphalt Shingles
Construction	Wood, Stucco
Foundation	Concrete Perimeter

School Information

Elementary	Calder School
Middle	Rosslyn School
High	Ross Sheppard High

Additional Information

Date Listed	September 1st, 2025
Days on Market	1
Zoning	Zone 01

DATA IS DEEMED RELIABLE BUT IS NOT GUARANTEED ACCURATE BY THE REALTORS® ASSOCIATION OF EDMONTON. COPYRIGHT 2025 BY THE REALTORS® ASSOCIATION OF EDMONTON. ALL RIGHTS RESERVED. Trademarks are owned or controlled by the Canadian Real Estate Association (CREA) and identify real estate professionals who are members of CREA (REALTOR®, REALTORS®) and/or the quality of services they provide (MLS®, Multiple Listing Service®)

Listing information last updated on September 2nd, 2025 at 9:02am MDT