

\$614,900 - 1113 Cristall Crescent, Edmonton

MLS® #E4455403

\$614,900

3 Bedroom, 2.50 Bathroom, 2,116 sqft

Single Family on 0.00 Acres

Chappelle Area, Edmonton, AB

Welcome to 1113 Cristall Crescent SW where thoughtful design meets modern living in the heart of Chappelle. Nestled on a desirable corner lot, this 2116 sq ft home offers 3 spacious bedrooms, a central bonus room, and a double attached garage. The dropped great room creates a striking focal point enhanced by full glass railings. Downstairs you will find an unspoiled basement with expansive 60" x 36" basement windows that flood the space with natural light. Want extra income or just additional living space? This home is perfect for future development or income potential because of the already equipped rear separate entrance and upgraded 150 amp panel which provides additional flexibility and peace of mind. Whether entertaining or enjoying quiet evenings, this home blends functionality with style in every detail. A rare opportunity to own a home that stands out in every aspect! Welcome to Chappelle! Your dream home awaits.

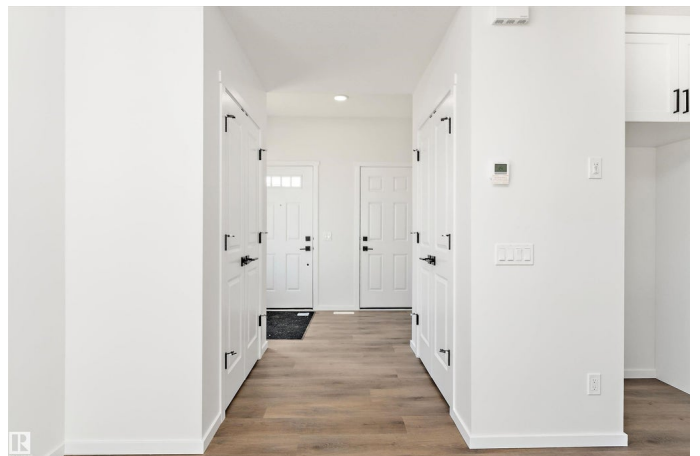
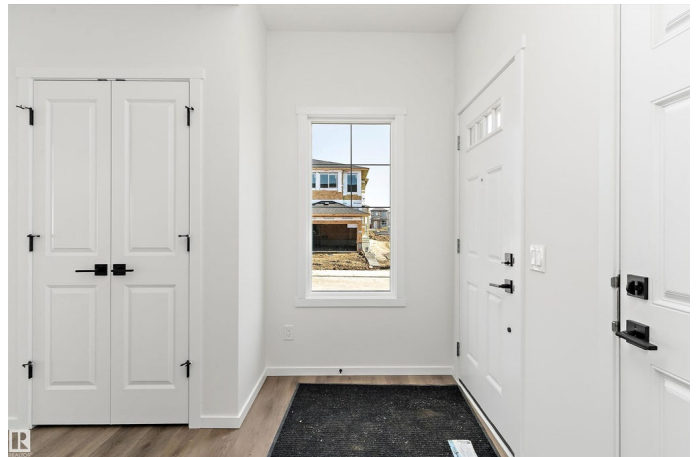
Built in 2025

Essential Information

MLS® # E4455403

Price \$614,900

Bedrooms 3



Bathrooms	2.50
Full Baths	2
Half Baths	1
Square Footage	2,116
Acres	0.00
Year Built	2025
Type	Single Family
Sub-Type	Detached Single Family
Style	2 Storey
Status	Active

Community Information

Address	1113 Cristall Crescent
Area	Edmonton
Subdivision	Chappelle Area
City	Edmonton
County	ALBERTA
Province	AB
Postal Code	T6W 2Z1

Amenities

Amenities	See Remarks
Parking	Double Garage Attached

Interior

Interior Features	ensuite bathroom
Appliances	Hood Fan, Oven-Microwave
Heating	Forced Air-1, Natural Gas
Stories	2
Has Basement	Yes
Basement	Full, Unfinished

Exterior

Exterior	Wood, Vinyl
Exterior Features	Playground Nearby, Public Transportation, Schools, Shopping Nearby
Roof	Asphalt Shingles
Construction	Wood, Vinyl
Foundation	Concrete Perimeter

Additional Information

Date Listed August 29th, 2025

Days on Market 1

Zoning Zone 55

HOA Fees Freq. Annually

DATA IS DEEMED RELIABLE BUT IS NOT GUARANTEED ACCURATE BY THE REALTORS® ASSOCIATION OF EDMONTON. COPYRIGHT 2025 BY THE REALTORS® ASSOCIATION OF EDMONTON. ALL RIGHTS RESERVED. Trademarks are owned or controlled by the Canadian Real Estate Association (CREA) and identify real estate professionals who are members of CREA (REALTOR®, REALTORS®) and/or the quality of services they provide (MLS®, Multiple Listing Service®)

Listing information last updated on August 30th, 2025 at 3:02pm MDT