

\$838,000 - 11022 85 Avenue, Edmonton

MLS® #E4454748

\$838,000

5 Bedroom, 3.50 Bathroom, 2,058 sqft

Single Family on 0.00 Acres

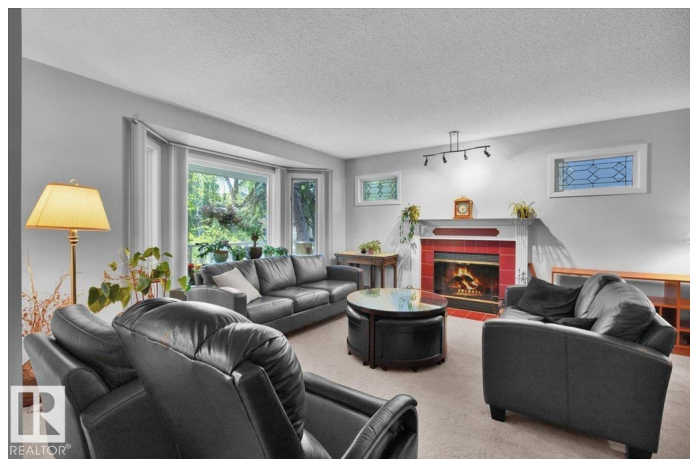
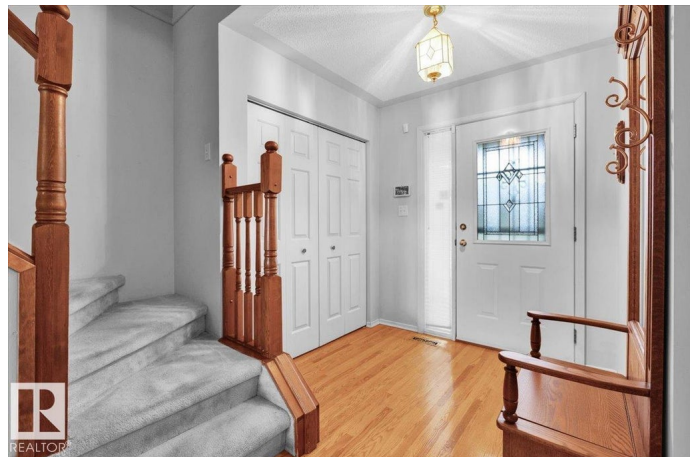
Garneau, Edmonton, AB

Terrific location on a beautiful tree lined street close to University of Alberta, Hospital, LRT , River Valley and numerous restaurants. Spacious 2 storey home features 4 bedrooms up including a large primary bedroom with walk in closet and nicely renovated ensuite bath. Main bathroom upstairs has also been very nicely renovated. Kitchen has also been renovated with newer cabinets, countertops and stainless steel appliances. Basement has a side entrance and is fully developed with a second kitchen, bedroom, living area and full bathroom. Very well cared for home. For more details please visit the REALTOR®'s Website.

Built in 1990

Essential Information

MLS® #	E4454748
Price	\$838,000
Bedrooms	5
Bathrooms	3.50
Full Baths	3
Half Baths	1
Square Footage	2,058
Acres	0.00
Year Built	1990
Type	Single Family



Sub-Type	Detached Single Family
Style	2 Storey
Status	Active

Community Information

Address	11022 85 Avenue
Area	Edmonton
Subdivision	Garneau
City	Edmonton
County	ALBERTA
Province	AB
Postal Code	T6G 0W6

Amenities

Amenities	Gazebo, See Remarks
Parking Spaces	4
Parking	Double Garage Detached

Interior

Interior Features	ensuite bathroom
Appliances	Dryer, Washer, Window Coverings, Refrigerators-Two, Stoves-Two, Dishwasher-Two
Heating	Forced Air-1, Natural Gas
Fireplace	Yes
Fireplaces	Mantel
Stories	2
Has Basement	Yes
Basement	Full, Finished

Exterior

Exterior	Wood, Brick, Vinyl
Exterior Features	Public Transportation, Schools, Shopping Nearby, See Remarks
Roof	Asphalt Shingles
Construction	Wood, Brick, Vinyl
Foundation	Concrete Perimeter

School Information

Elementary	Garneau/Our Lady of Mount
Middle	Mckernan/Louis St. L

High Strathcona/St. Brendan

Additional Information

Date Listed August 26th, 2025

Zoning Zone 15

DATA IS DEEMED RELIABLE BUT IS NOT GUARANTEED ACCURATE BY THE REALTORS® ASSOCIATION OF EDMONTON. COPYRIGHT 2025 BY THE REALTORS® ASSOCIATION OF EDMONTON. ALL RIGHTS RESERVED.Trademarks are owned or controlled by the Canadian Real Estate Association (CREA) and identify real estate professionals who are members of CREA (REALTOR®, REALTORS®) and/or the quality of services they provide (MLS®, Multiple Listing Service®)
Listing information last updated on August 26th, 2025 at 5:32pm MDT