

# \$599,000 - 1918 Westerra Lane, Stony Plain

MLS® #E4454611

**\$599,000**

3 Bedroom, 2.50 Bathroom, 1,874 sqft  
Single Family on 0.00 Acres

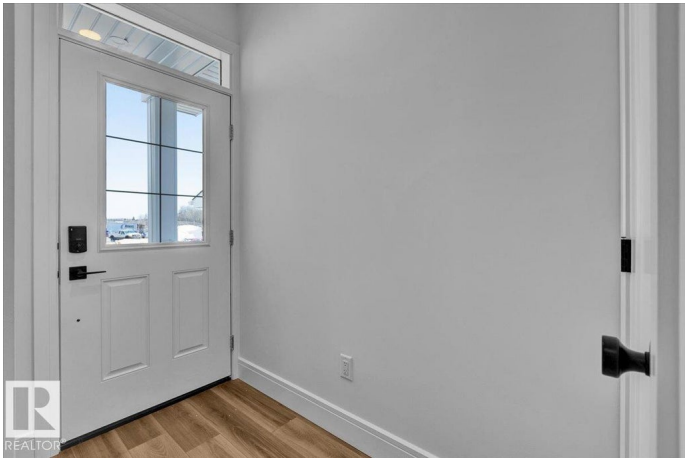
Westerra, Stony Plain, AB

5 Things to Love About This Home: 1) Triple Attached Garage – Ample parking and storage space for your vehicles, toys, and gear. 2) Functional & Stylish Main Floor – Open concept living with an electric fireplace, kitchen island with breakfast bar, stainless steel appliances, and a walkthrough pantry leading to the mudroom with garage access. 3) Upper-Level Convenience – Enjoy a bright bonus room, laundry area, 2 spacious bedrooms, 4pc bath, and a luxurious primary retreat with a 5pc ensuite, dual sinks, soaker tub, stand shower & walk-in closet. 4) Smart Side Entrance – Separate side entry offers added flexibility. 5) Ideal Location – Nestled in beautiful Stony Plain, close to parks, playgrounds, schools & amenities. \*Photos are representative\*

Built in 2025

## Essential Information

MLS® #	E4454611
Price	\$599,000
Bedrooms	3
Bathrooms	2.50
Full Baths	2
Half Baths	1
Square Footage	1,874
Acres	0.00



Year Built	2025
Type	Single Family
Sub-Type	Detached Single Family
Style	2 Storey
Status	Active

### **Community Information**

Address	1918 Westerra Lane
Area	Stony Plain
Subdivision	Westerra
City	Stony Plain
County	ALBERTA
Province	AB
Postal Code	T7Z 0L3

### **Amenities**

Amenities	Exterior Walls- 2"x6", No Animal Home, No Smoking Home
Parking	Triple Garage Attached

### **Interior**

Interior Features	ensuite bathroom
Appliances	Dishwasher-Built-In, Garage Control, Garage Opener, Microwave Hood Fan, Refrigerator, Stove-Electric
Heating	Forced Air-1, Natural Gas
Fireplace	Yes
Fireplaces	Insert
Stories	2
Has Basement	Yes
Basement	Full, Unfinished

### **Exterior**

Exterior	Wood, Vinyl
Exterior Features	Park/Reserve, Playground Nearby, Schools, Shopping Nearby
Roof	Asphalt Shingles
Construction	Wood, Vinyl
Foundation	Concrete Perimeter

### **Additional Information**

Date Listed	August 25th, 2025
-------------	-------------------

Days on Market 1

Zoning Zone 91

DATA IS DEEMED RELIABLE BUT IS NOT GUARANTEED ACCURATE BY THE REALTORS® ASSOCIATION OF EDMONTON. COPYRIGHT 2025 BY THE REALTORS® ASSOCIATION OF EDMONTON. ALL RIGHTS RESERVED. Trademarks are owned or controlled by the Canadian Real Estate Association (CREA) and identify real estate professionals who are members of CREA (REALTOR®, REALTORS®) and/or the quality of services they provide (MLS®, Multiple Listing Service®)

Listing information last updated on August 26th, 2025 at 11:18am MDT