

Courtesy Of Michael J Waddell Of Real Broker

\$375,000 - 50 20 Augustine Crescent, Sherwood Park

MLS® #E4453162

\$375,000

2 Bedroom, 2.50 Bathroom, 1,551 sqft
Condo / Townhouse on 0.00 Acres

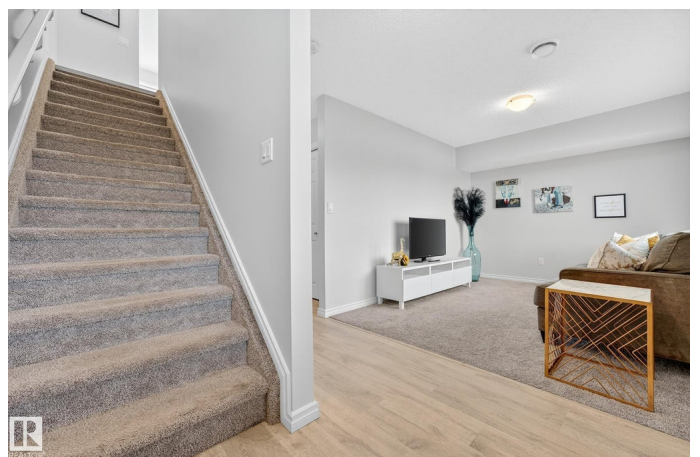
Aspen Trails, Sherwood Park, AB

Welcome to The Gardens in Aspen Trails! Step inside this stylish townhouse and youâ€™re greeted by a welcoming foyer with convenient access to your double attached garage and a cozy flex living spaceâ€™perfect for a home office or reading nook as well as a storage area. Head upstairs to the main living area, where the open-concept design connects the bright living room, dining space, and a modern kitchen with ample cabinetry, a pantry, and room to entertain. A powder room completes this level for guestsâ€™convenience. A balcony off of the second floor provides a great space for relaxation or morning coffee. The top floor is designed for comfort, featuring two spacious primary suites, each with its own walk-in closet and private 4-piece ensuite, offering flexibility for guests or a roommate. Laundry is conveniently located on this floor as well, making day-to-day living a breeze. This home combines thoughtful layout, modern finishes, and an unbeatable location close to trails, parks, and all amenities.

Built in 2017

Essential Information

MLS® #	E4453162
Price	\$375,000
Bedrooms	2



Bathrooms	2.50
Full Baths	2
Half Baths	1
Square Footage	1,551
Acres	0.00
Year Built	2017
Type	Condo / Townhouse
Sub-Type	Townhouse
Style	3 Storey
Status	Active

Community Information

Address	50 20 Augustine Crescent
Area	Sherwood Park
Subdivision	Aspen Trails
City	Sherwood Park
County	ALBERTA
Province	AB
Postal Code	T8H 0Z8

Amenities

Amenities	Off Street Parking, Air Conditioner, Deck
Parking	Double Garage Attached

Interior

Interior Features	ensuite bathroom
Appliances	Dishwasher-Built-In, Dryer, Microwave Hood Fan, Refrigerator, Stove-Electric, Washer, Window Coverings
Heating	Forced Air-1, Natural Gas
Stories	3
Has Basement	Yes
Basement	None, No Basement

Exterior

Exterior	Wood, Stone, Vinyl
Exterior Features	Golf Nearby, Landscaped, Playground Nearby, Public Transportation, Schools, Shopping Nearby
Roof	Asphalt Shingles
Construction	Wood, Stone, Vinyl

Foundation Concrete Perimeter

Additional Information

Date Listed August 15th, 2025

Days on Market 2

Zoning Zone 25

Condo Fee \$275

DATA IS DEEMED RELIABLE BUT IS NOT GUARANTEED ACCURATE BY THE REALTORS® ASSOCIATION OF EDMONTON. COPYRIGHT 2025 BY THE REALTORS® ASSOCIATION OF EDMONTON. ALL RIGHTS RESERVED. Trademarks are owned or controlled by the Canadian Real Estate Association (CREA) and identify real estate professionals who are members of CREA (REALTOR®, REALTORS®) and/or the quality of services they provide (MLS®, Multiple Listing Service®)

Listing information last updated on August 17th, 2025 at 2:47pm MDT