

\$290,000 - 93 Wellington Crescent, Spruce Grove

MLS® #E4453064

\$290,000

3 Bedroom, 1.50 Bathroom, 1,173 sqft
Single Family on 0.00 Acres

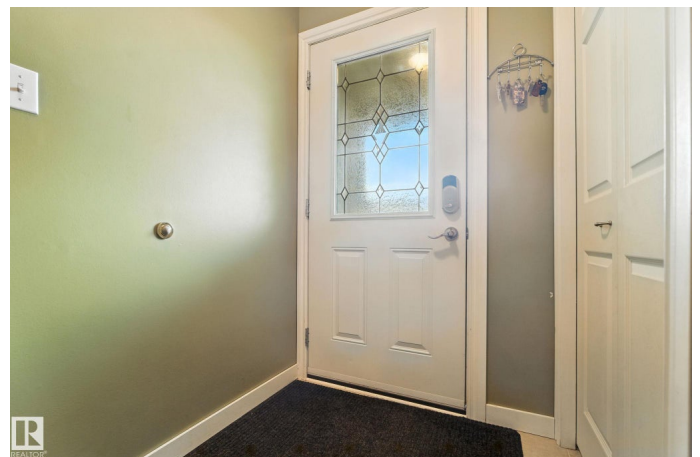
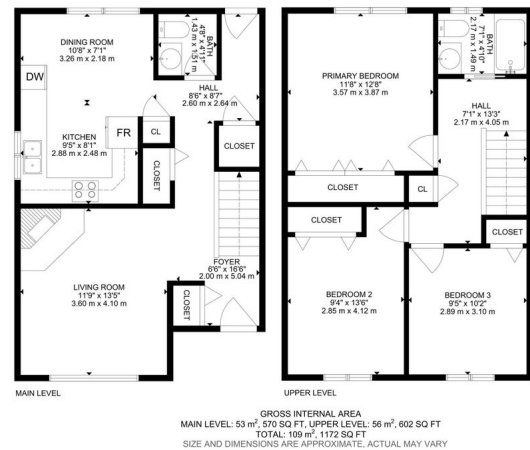
Woodhaven_SPGR, Spruce Grove, AB

Fall in love with this charming 2-storey half duplex, perfectly nestled on a generous lot in a quiet, family-friendly community! Sunlight pours into the spacious living room, creating a warm, welcoming space to unwind. The family-sized kitchen boasts ample cabinetry, sleek granite countertops, a cozy dining nook, and easy-care laminate flooring. A handy half bath completes the main floor. Upstairs, discover 3 inviting bedrooms, a full bath with relaxing soaker tub, and plenty of storage. NEW UPGRADES sparkle throughout—new roof (2025), granite kitchen counters (2025), water heater (2025), fridge (2024), microwave hood fan (2025), central A/C (2024), carpeted stairs (2025), and engineered hardwood upstairs (2025). Step outside to a huge deck for summer BBQs, a storage shed, fully fenced yard, and a double concrete parking pad. Close to schools, shopping, and transit—this beauty blends comfort, style, and unbeatable value. Don't wait—your perfect home or investment is here!

Built in 1978

Essential Information

MLS® #	E4453064
Price	\$290,000
Bedrooms	3



Bathrooms	1.50
Full Baths	1
Half Baths	1
Square Footage	1,173
Acres	0.00
Year Built	1978
Type	Single Family
Sub-Type	Half Duplex
Style	2 Storey
Status	Active

Community Information

Address	93 Wellington Crescent
Area	Spruce Grove
Subdivision	Woodhaven_SPGR
City	Spruce Grove
County	ALBERTA
Province	AB
Postal Code	T7X 1J9

Amenities

Amenities	On Street Parking, Air Conditioner, Deck, No Animal Home, No Smoking Home
Parking Spaces	3
Parking	Front Drive Access, Parking Pad Cement/Paved

Interior

Appliances	Air Conditioning-Central, Dishwasher-Built-In, Dryer, Microwave Hood Fan, Refrigerator, Storage Shed, Stove-Electric, Washer, Window Coverings
Heating	Forced Air-1, Natural Gas
Fireplace	Yes
Fireplaces	Woodstove
Stories	2
Has Basement	Yes
Basement	Full, Unfinished

Exterior

Exterior	Wood, Brick, Metal
----------	--------------------

Exterior Features	Fenced, Flat Site, Partially Landscaped, Playground Nearby, Public Transportation, Schools, Shopping Nearby
Roof	Asphalt Shingles
Construction	Wood, Brick, Metal
Foundation	Concrete Perimeter

Additional Information

Date Listed August 14th, 2025

Days on Market 3

Zoning Zone 91

DATA IS DEEMED RELIABLE BUT IS NOT GUARANTEED ACCURATE BY THE REALTORS® ASSOCIATION OF EDMONTON. COPYRIGHT 2025 BY THE REALTORS® ASSOCIATION OF EDMONTON. ALL RIGHTS RESERVED. Trademarks are owned or controlled by the Canadian Real Estate Association (CREA) and identify real estate professionals who are members of CREA (REALTOR®, REALTORS®) and/or the quality of services they provide (MLS®, Multiple Listing Service®)

Listing information last updated on August 17th, 2025 at 4:47pm MDT