

\$339,900 - 4886 Terwillegar Common, Edmonton

MLS® #E4450725

\$339,900

3 Bedroom, 2.50 Bathroom, 1,213 sqft

Condo / Townhouse on 0.00 Acres

South Terwillegar, Edmonton, AB

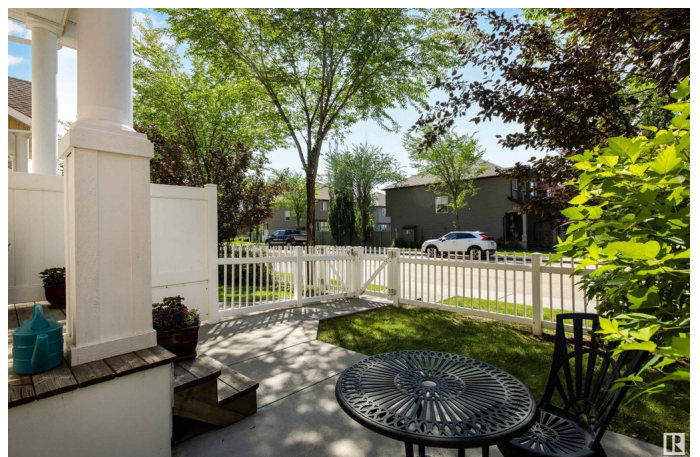
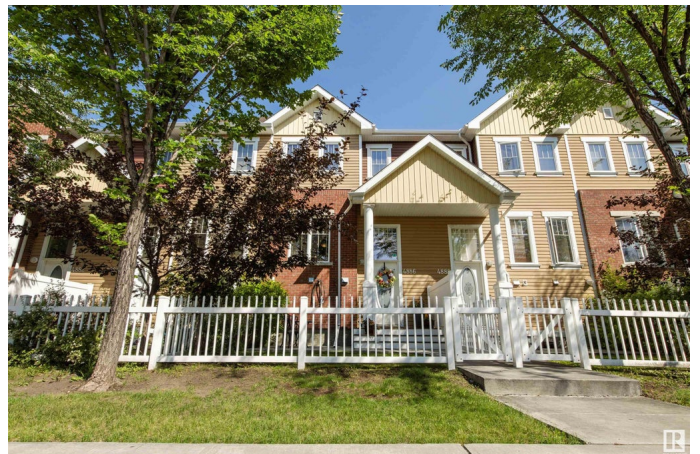
The one you've been waiting for! Welcome home to Mosaic Towne Square, in the bustling community of Terwillegar. Move in ready + LOW CONDO fees, it's easy to envision YOUR life here! Ample street parking awaits + super cute little front yard to relax & enjoy your day. Step inside to a great sized entry that boasts 12x24 ceramic tile floors and opens into the main living areas. Living room is BRIGHT and open with LOADS of natural LIGHT through S facing windows + 9' ceilings. Kitchen/dining areas are OPEN & INVITING w/tons of cabinet space, island seating, SS appliances and space for 6 to eat comfortably. Upstairs boasts 3 great sized bedrooms, including the master with walk-in closet & 4 pc ensuite bath! Basement is unspoiled and offers additional storage, laundry area, plus access to DOUBLE ATTACHED garage. Quiet neighbors, exceptionally WELL RUN complex, amenities galore, walking trails, Rec. Center, quick access to A. Henday, restaurants/shopping and SO much more! See it today, and don't delay.

Built in 2011

Essential Information

MLS® # E4450725

Price \$339,900



Bedrooms	3
Bathrooms	2.50
Full Baths	2
Half Baths	1
Square Footage	1,213
Acres	0.00
Year Built	2011
Type	Condo / Townhouse
Sub-Type	Townhouse
Style	2 Storey
Status	Active

Community Information

Address	4886 Terwillegar Common
Area	Edmonton
Subdivision	South Terwillegar
City	Edmonton
County	ALBERTA
Province	AB
Postal Code	T6R 0S3

Amenities

Amenities	Ceiling 9 ft., Deck, Detectors Smoke, Parking-Visitor, Vinyl Windows, Natural Gas BBQ Hookup
Parking	Double Garage Attached

Interior

Interior Features	ensuite bathroom
Appliances	Dishwasher-Built-In, Dryer, Garage Control, Microwave Hood Fan, Refrigerator, Stove-Electric, Washer, Window Coverings
Heating	Forced Air-1, Natural Gas
Stories	2
Has Basement	Yes
Basement	Partial, Unfinished

Exterior

Exterior	Wood, Brick, Vinyl
Exterior Features	Flat Site, Golf Nearby, Low Maintenance Landscape, Picnic Area, Playground Nearby, Public Swimming Pool, Public Transportation,

	Schools, Shopping Nearby
Roof	Asphalt Shingles
Construction	Wood, Brick, Vinyl
Foundation	Concrete Perimeter

Additional Information

Date Listed	August 1st, 2025
Days on Market	1
Zoning	Zone 14
HOA Fees	138
HOA Fees Freq.	Annually
Condo Fee	\$222

DATA IS DEEMED RELIABLE BUT IS NOT GUARANTEED ACCURATE BY THE REALTORS® ASSOCIATION OF EDMONTON. COPYRIGHT 2025 BY THE REALTORS® ASSOCIATION OF EDMONTON. ALL RIGHTS RESERVED. Trademarks are owned or controlled by the Canadian Real Estate Association (CREA) and identify real estate professionals who are members of CREA (REALTOR®, REALTORS®) and/or the quality of services they provide (MLS®, Multiple Listing Service®)

Listing information last updated on August 2nd, 2025 at 2:32pm MDT