

\$137,900 - 80 8745 165 Street, Edmonton

MLS® #E4450080

\$137,900

1 Bedroom, 1.00 Bathroom, 682 sqft
Condo / Townhouse on 0.00 Acres

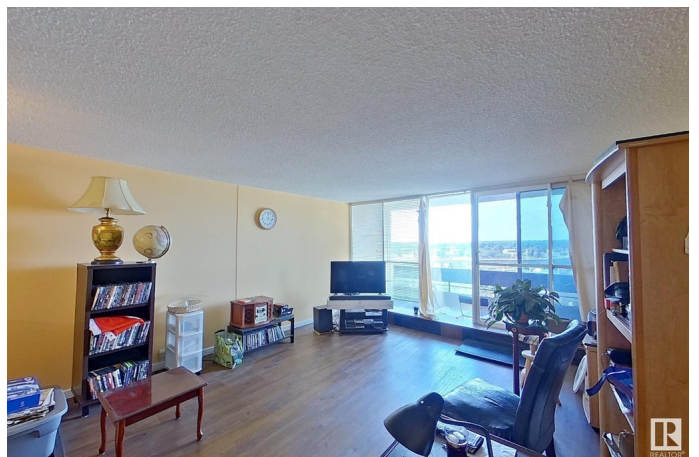
West Meadowlark Park, Edmonton, AB

Tastefully Upgraded One-Bedroom in Prime Meadowlark Location! This spacious 682 sq.ft. one-bedroom condo offers a unique raised living room and bedroom layout, creating an open and airy feel. Enjoy stylish laminate and tile flooring throughout, a luxurious jetted tub in the master ensuite, and sweeping unobstructed views of the city. The low condo fee covers all utilities—heat, water, and electricity—making it an excellent value. Conveniently located within walking distance to West Edmonton Mall and the upcoming Valley Line LRT station. Perfect for first-time buyers, downsizers, or investors!

Built in 1970

Essential Information

MLS® #	E4450080
Price	\$137,900
Bedrooms	1
Bathrooms	1.00
Full Baths	1
Square Footage	682
Acres	0.00
Year Built	1970
Type	Condo / Townhouse
Sub-Type	Apartment High Rise
Style	Single Level Apartment



Status Active

Community Information

Address 80 8745 165 Street
Area Edmonton
Subdivision West Meadowlark Park
City Edmonton
County ALBERTA
Province AB
Postal Code T5R 2R7

Amenities

Amenities Detectors Smoke, Parking-Visitor, Storage-Locker Room
Parking Stall

Interior

Interior Features ensuite bathroom
Appliances Dishwasher-Built-In, Hood Fan, Refrigerator, Stove-Electric
Heating Baseboard, Water
of Stories 17
Stories 1
Has Basement Yes
Basement None, No Basement

Exterior

Exterior Concrete
Exterior Features Playground Nearby, Public Transportation, Schools, Shopping Nearby, View City
Roof Tar & Gravel
Construction Concrete
Foundation Concrete Perimeter

School Information

Elementary Aleda Patterson School
Middle Alex Janvier School
High Jasper Place School

Additional Information

Date Listed July 28th, 2025
Days on Market 91

Zoning	Zone 22
Condo Fee	\$377

DATA IS DEEMED RELIABLE BUT IS NOT GUARANTEED ACCURATE BY THE REALTORS® ASSOCIATION OF EDMONTON. COPYRIGHT 2025 BY THE REALTORS® ASSOCIATION OF EDMONTON. ALL RIGHTS RESERVED. Trademarks are owned or controlled by the Canadian Real Estate Association (CREA) and identify real estate professionals who are members of CREA (REALTOR®, REALTORS®) and/or the quality of services they provide (MLS®, Multiple Listing Service®)

Listing information last updated on October 27th, 2025 at 12:47pm MDT