

\$625,000 - 229 Heath Road, Edmonton

MLS® #E4448344

\$625,000

5 Bedroom, 3.50 Bathroom, 2,127 sqft

Single Family on 0.00 Acres

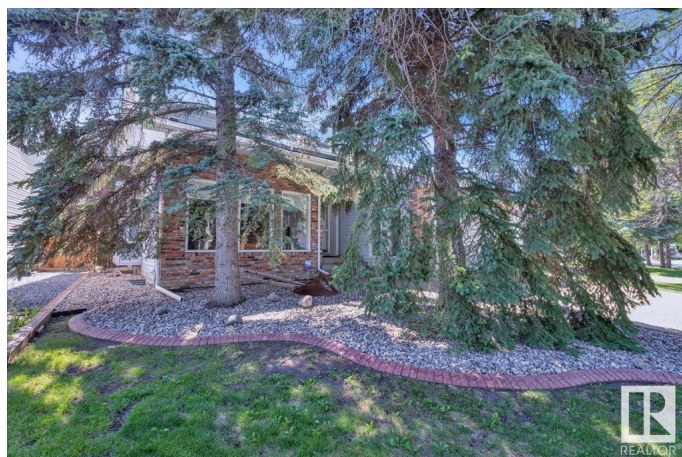
Henderson Estates, Edmonton, AB

If you've been dreaming of living in a prestigious, mature neighborhood near the river valley, walking trails, top-rated schools, and all essential amenities just minutes away, this is your opportunity. Located in Henderson Estate, one of Edmonton's most sought-after communities, this beautifully laid-out home offers the space, privacy, and character that newer subdivisions simply can't match. Step into a warm, inviting layout designed for family living where mom can prepare meals in the spacious kitchen while the kids do homework or watch TV nearby. Picture holidays like Christmas Eve with loved ones gathered in the open living room and raised formal dining area, framed by huge windows that fill the space with natural light. Enjoy this 5 bedroom 4 bath home with a huge south facing lovingly landscaped backyard and a big double car garage. This is not a cookie cutter house, it's a forever home full of charm, functionality, and potential in a location that truly has it all.

Built in 1985

Essential Information

MLS® #	E4448344
Price	\$625,000
Bedrooms	5



Bathrooms	3.50
Full Baths	3
Half Baths	1
Square Footage	2,127
Acres	0.00
Year Built	1985
Type	Single Family
Sub-Type	Detached Single Family
Style	2 Storey
Status	Active

Community Information

Address	229 Heath Road
Area	Edmonton
Subdivision	Henderson Estates
City	Edmonton
County	ALBERTA
Province	AB
Postal Code	T6R 1S1

Amenities

Amenities	Air Conditioner, Deck, No Smoking Home, Skylight, Vaulted Ceiling
Parking Spaces	4
Parking	Double Garage Attached

Interior

Interior Features	ensuite bathroom
Appliances	Air Conditioning-Central, Alarm/Security System, Dishwasher-Built-In, Dryer, Garage Control, Garburator, Microwave Hood Fan, Refrigerator, Stove-Electric, Vacuum System Attachments, Vacuum Systems, Washer, Water Softener, Window Coverings
Heating	Forced Air-1, Natural Gas
Fireplace	Yes
Fireplaces	Brick Facing
Stories	3
Has Basement	Yes
Basement	Full, Partially Finished

Exterior

Exterior	Wood, Brick, Vinyl
Exterior Features	Fenced, Golf Nearby, Landscaped, Low Maintenance Landscape, Park/Reserve, Playground Nearby, Public Transportation, Schools, Shopping Nearby, Ski Hill Nearby
Roof	Asphalt Shingles
Construction	Wood, Brick, Vinyl
Foundation	Concrete Perimeter

School Information

Elementary	Earl Buxton
Middle	Riverbend
High	Lillian Osborne

Additional Information

Date Listed	July 17th, 2025
Days on Market	1
Zoning	Zone 14

DATA IS DEEMED RELIABLE BUT IS NOT GUARANTEED ACCURATE BY THE REALTORS® ASSOCIATION OF EDMONTON. COPYRIGHT 2025 BY THE REALTORS® ASSOCIATION OF EDMONTON. ALL RIGHTS RESERVED.Trademarks are owned or controlled by the Canadian Real Estate Association (CREA) and identify real estate professionals who are members of CREA (REALTOR®, REALTORS®) and/or the quality of services they provide (MLS®, Multiple Listing Service®)

Listing information last updated on July 17th, 2025 at 11:32pm MDT