

\$79,000 - 206 10330 113 Street, Edmonton

MLS® #E4447996

\$79,000

1 Bedroom, 1.00 Bathroom, 588 sqft
Condo / Townhouse on 0.00 Acres

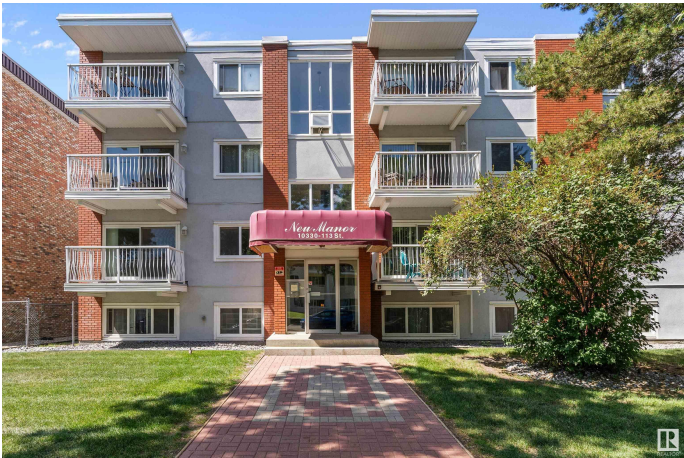
Wetaskinwin, Edmonton, AB

Welcome to Neu Manor, a well-managed building in the heart of Wetaskinwin—just minutes from Grant MacEwan University, LRT access, and Edmonton’s vibrant downtown. This 1 bedroom, 1 bathroom condo on the 2nd floor offers a smart layout with 587 sq ft of living space, and comes in at a price that’s hard to beat. Inside, you’ll find brand new vinyl flooring, a bright and open living area, and access to your own private balcony. The unit includes an outdoor parking stall, and the building has seen important upgrades over the years including newer balconies, windows, and exterior work—reflecting the pride in ownership and care by the condo board. Whether you’re a first-time buyer or an investor looking for a solid rental in a high-demand area, this location delivers—close to shopping, dining, transit, the Ice District, and scenic river valley trails.

Built in 1973

Essential Information

MLS® #	E4447996
Price	\$79,000
Bedrooms	1
Bathrooms	1.00
Full Baths	1



Square Footage	588
Acres	0.00
Year Built	1973
Type	Condo / Townhouse
Sub-Type	Lowrise Apartment
Style	Single Level Apartment
Status	Active

Community Information

Address	206 10330 113 Street
Area	Edmonton
Subdivision	WÃ©hkwÃ©ntÃ©win
City	Edmonton
County	ALBERTA
Province	AB
Postal Code	T5K 1P6

Amenities

Amenities	On Street Parking, Deck, No Animal Home, No Smoking Home, Parking-Visitor
Parking	Stall

Interior

Appliances	Hood Fan, Refrigerator, Stove-Electric
Heating	Baseboard, Natural Gas
# of Stories	3
Stories	3
Has Basement	Yes
Basement	None, No Basement

Exterior

Exterior	Wood, Brick, Stucco
Exterior Features	Back Lane, Flat Site, Golf Nearby, Playground Nearby, Public Swimming Pool, Public Transportation, Schools, Shopping Nearby
Roof	Tar & Gravel
Construction	Wood, Brick, Stucco
Foundation	Concrete Perimeter

Additional Information

Date Listed	July 15th, 2025
Days on Market	6
Zoning	Zone 12
Condo Fee	\$400

DATA IS DEEMED RELIABLE BUT IS NOT GUARANTEED ACCURATE BY THE REALTORS® ASSOCIATION OF EDMONTON. COPYRIGHT 2025 BY THE REALTORS® ASSOCIATION OF EDMONTON. ALL RIGHTS RESERVED. Trademarks are owned or controlled by the Canadian Real Estate Association (CREA) and identify real estate professionals who are members of CREA (REALTOR®, REALTORS®) and/or the quality of services they provide (MLS®, Multiple Listing Service®)

Listing information last updated on July 20th, 2025 at 10:47pm MDT