

\$289,000 - N/A, Edmonton

MLS® #E4447930

\$289,000

3 Bedroom, 2.50 Bathroom, 1,410 sqft

Condo / Townhouse on 0.00 Acres

Tawa, Edmonton, AB

Please note property is sold "as is where is" at time of possession. No warranties or representations

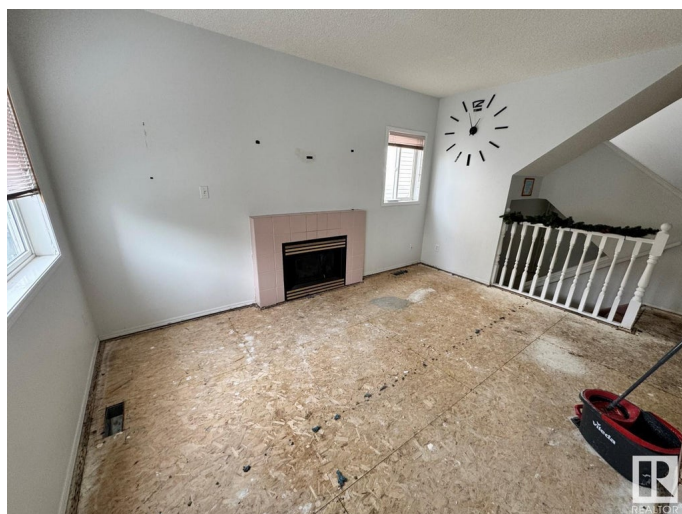
Built in 1993

Essential Information

MLS® #	E4447930
Price	\$289,000
Bedrooms	3
Bathrooms	2.50
Full Baths	2
Half Baths	1
Square Footage	1,410
Acres	0.00
Year Built	1993
Type	Condo / Townhouse
Sub-Type	Half Duplex
Style	4 Level Split
Status	Active

Community Information

Address	N/A
Area	Edmonton
Subdivision	Tawa
City	Edmonton
County	ALBERTA
Province	AB



Postal Code T6L 6X8

Amenities

Amenities See Remarks
Parking Single Garage Attached

Interior

Appliances See Remarks
Heating Forced Air-1, Natural Gas
Stories 4
Has Basement Yes
Basement Full, Unfinished

Exterior

Exterior Wood, Vinyl
Exterior Features Fenced, Landscaped, Public Transportation, Schools, Shopping Nearby
Roof Asphalt Shingles
Construction Wood, Vinyl
Foundation Concrete Perimeter

Additional Information

Date Listed July 15th, 2025
Days on Market 6
Zoning Zone 29
RE / Bank Owned Yes
Condo Fee \$193

DATA IS DEEMED RELIABLE BUT IS NOT GUARANTEED ACCURATE BY THE REALTORS® ASSOCIATION OF EDMONTON. COPYRIGHT 2025 BY THE REALTORS® ASSOCIATION OF EDMONTON. ALL RIGHTS RESERVED. Trademarks are owned or controlled by the Canadian Real Estate Association (CREA) and identify real estate professionals who are members of CREA (REALTOR®, REALTORS®) and/or the quality of services they provide (MLS®, Multiple Listing Service®)

Listing information last updated on July 21st, 2025 at 12:02am MDT