

\$688,800 - 2120 Ware Road, Edmonton

MLS® #E4447206

\$688,800

4 Bedroom, 3.50 Bathroom, 2,023 sqft

Single Family on 0.00 Acres

Windermere, Edmonton, AB

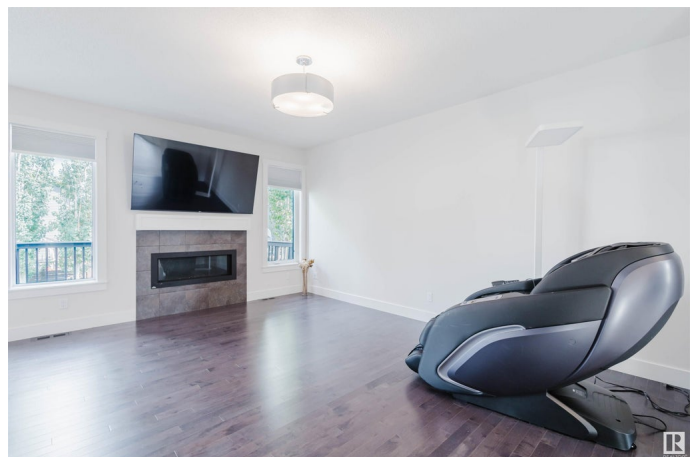
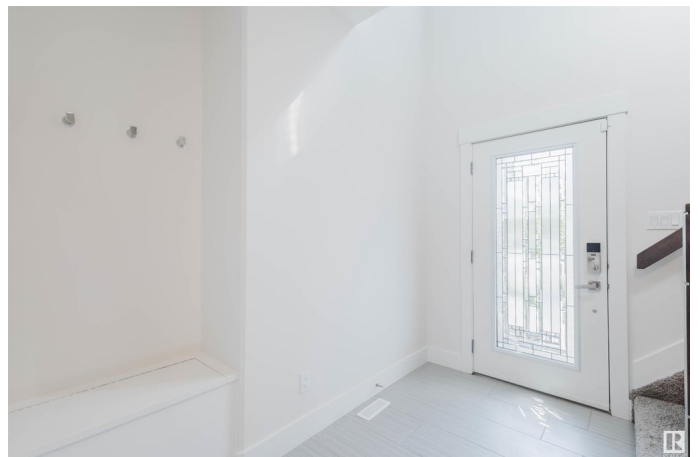
Modern Family Living in Prestigious ONE at Windermere! This original-owner, fully finished home sits on a large 5,000+ sqft PIE lot in a quiet cul-de-sac, offering nearly 2,600 sqft of stylish living space w/ 4 bedrooms & 3.5 baths. Freshly painted throughout, the home welcomes you w/ a spacious foyer & high ceiling. Open-concept 9â€™™ main floor features hardwood & tile flooring, a cozy living room w/ gas fireplace; Chefâ€™™s kitchen has two-tone cabinetry, SS appliances, a large granite island, glass backsplash, and walk-through pantry. Upstairs you'll find a bright bonus room, convenient laundry, and 3 generously sized bedroomsâ€”including the large primary suite with walk-in closet and spa-like 5-piece ensuite. The fully finished basement includes laminate flooring, a large rec/exercise area, 4th bedroom, and full bath. Enjoy the east-facing, private backyard with a large deck and kids playsetâ€”perfect for summer fun! Just a short walk to Constable Daniel Woodall School, Superstore, restaurants, and much more!

Built in 2014

Essential Information

MLS® # E4447206

Price \$688,800



Bedrooms	4
Bathrooms	3.50
Full Baths	3
Half Baths	1
Square Footage	2,023
Acres	0.00
Year Built	2014
Type	Single Family
Sub-Type	Detached Single Family
Style	2 Storey
Status	Active

Community Information

Address	2120 Ware Road
Area	Edmonton
Subdivision	Windermere
City	Edmonton
County	ALBERTA
Province	AB
Postal Code	T6W 2T9

Amenities

Amenities	Air Conditioner, Ceiling 9 ft., Deck, Detectors Smoke, Hot Water Natural Gas, No Animal Home, No Smoking Home, Vinyl Windows
Parking	Double Garage Attached

Interior

Interior Features	ensuite bathroom
Appliances	Air Conditioning-Central, Dishwasher-Built-In, Dryer, Garage Control, Garage Opener, Hood Fan, Refrigerator, Storage Shed, Stove-Electric, Washer, See Remarks
Heating	Forced Air-1, Natural Gas
Stories	3
Has Basement	Yes
Basement	Full, Finished

Exterior

Exterior	Wood, Stone, Vinyl
Exterior Features	Cul-De-Sac, Fenced, Flat Site, Landscaped, Playground Nearby, Public

	Transportation, Schools, Shopping Nearby
Roof	Asphalt Shingles
Construction	Wood, Stone, Vinyl
Foundation	Slab

School Information

Elementary	Constable Daniel Woodall
Middle	Riverbend School
High	Lillian Osborne School

Additional Information

Date Listed	July 11th, 2025
Days on Market	7
Zoning	Zone 56
HOA Fees	274.56
HOA Fees Freq.	Annually

DATA IS DEEMED RELIABLE BUT IS NOT GUARANTEED ACCURATE BY THE REALTORS® ASSOCIATION OF EDMONTON. COPYRIGHT 2025 BY THE REALTORS® ASSOCIATION OF EDMONTON. ALL RIGHTS RESERVED. Trademarks are owned or controlled by the Canadian Real Estate Association (CREA) and identify real estate professionals who are members of CREA (REALTOR®, REALTORS®) and/or the quality of services they provide (MLS®, Multiple Listing Service®)

Listing information last updated on July 18th, 2025 at 7:32am MDT