

\$449,900 - 5431 Crabapple Loop, Edmonton

MLS® #E4446891

\$449,900

3 Bedroom, 2.50 Bathroom, 1,703 sqft
Single Family on 0.00 Acres

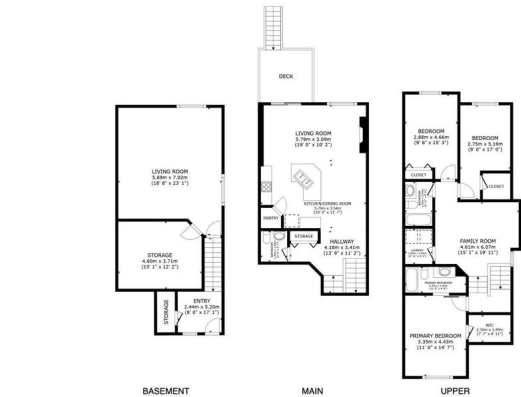
The Orchards At Ellerslie, Edmonton, AB

Welcome to this **STYLISH HALF DUPLEX** featuring a modern kitchen with ceiling-height cabinetry, quartz countertops, stainless steel appliances, island, and walk-in pantry. The cozy living room includes an electric fireplace and opens to a private deck with wrought iron railing and privacy lattice. Upstairs offers a spacious **PRIMARY SUITE WITH WALK-IN CLOSET AND 4-PIECE ENSUITE**, plus two additional bedrooms, full bath, laundry room, and a bonus room with projector perfect for movie nights. The partially finished basement includes a rec space, wet bar rough-in, and storage. Enjoy exclusive access to **THE ORCHARDS CLUBHOUSE WITH SPLASH PARK, SKATING RINK, PLAYGROUNDS, TENNIS AND BASKETBALL COURTS**. Jan Reimer Kâ€™9 School, community parks, dog park, and trails are all nearby, with quick access to **ANTHONY HENDAY, CALGARY TRAIL, AND YEG AIRPORT**.

Built in 2013

Essential Information

MLS® #	E4446891
Price	\$449,900
Bedrooms	3
Bathrooms	2.50
Full Baths	2



5431 CRABAPPLE LOOP SW
THE ORCHARDS AT ELLERSLIE
EDMONTON

GROSS INTERNAL AREA
FLOOR 1 65.3 m² (703 sq ft) FLOOR 2 54.2 m² (583 sq ft) FLOOR 3 84.8 m² (912 sq ft)
TOTAL 204.3 m² (2200 sq ft)

SIZES AND DIMENSIONS ARE APPROXIMATE, ACTUAL MAY VARY

Half Baths	1
Square Footage	1,703
Acres	0.00
Year Built	2013
Type	Single Family
Sub-Type	Half Duplex
Style	4 Level Split
Status	Active

Community Information

Address	5431 Crabapple Loop
Area	Edmonton
Subdivision	The Orchards At Ellerslie
City	Edmonton
County	ALBERTA
Province	AB
Postal Code	T6X 1S5

Amenities

Amenities	Off Street Parking, Carbon Monoxide Detectors, Club House, Deck, Dog Run-Fenced In, No Animal Home, No Smoking Home, Tennis Courts, Vinyl Windows
Parking	Single Garage Attached

Interior

Interior Features	ensuite bathroom
Appliances	Dishwasher-Built-In, Dryer, Garage Control, Garage Opener, Microwave Hood Fan, Refrigerator, Stove-Electric, Washer, Window Coverings, Projector, TV Wall Mount
Heating	Forced Air-1, Natural Gas
Fireplace	Yes
Fireplaces	Wall Mount
Stories	3
Has Basement	Yes
Basement	Full, Partially Finished

Exterior

Exterior	Wood, Vinyl
Exterior Features	Airport Nearby, Playground Nearby, Public Transportation, Schools, Private Park Access

Roof	Asphalt Shingles
Construction	Wood, Vinyl
Foundation	Concrete Perimeter

School Information

Elementary	Jan Reimer School K-9
Middle	Jan Reimer School K-9
High	J.Percy Page School

Additional Information

Date Listed	July 10th, 2025
Days on Market	17
Zoning	Zone 53
HOA Fees	450
HOA Fees Freq.	Annually

DATA IS DEEMED RELIABLE BUT IS NOT GUARANTEED ACCURATE BY THE REALTORS® ASSOCIATION OF EDMONTON. COPYRIGHT 2025 BY THE REALTORS® ASSOCIATION OF EDMONTON. ALL RIGHTS RESERVED.Trademarks are owned or controlled by the Canadian Real Estate Association (CREA) and identify real estate professionals who are members of CREA (REALTOR®, REALTORS®) and/or the quality of services they provide (MLS®, Multiple Listing Service®)

Listing information last updated on July 27th, 2025 at 12:02pm MDT