

\$129,900 - 207 12404 161 Avenue, Edmonton

MLS® #E4446758

\$129,900

2 Bedroom, 1.00 Bathroom, 816 sqft

Condo / Townhouse on 0.00 Acres

Dunluce, Edmonton, AB

2 BEDROOM APARTMENT IN DUNLUCE HAS BEEN NEWLY RENOVATED! Ideally located close to all amenities including but not limited to: schools, daycares, shopping, transportation, main thoroughfares, & recreation centre, this property offers a great opportunity for a first time buyer or investor looking to capitalize on a very good rental potential. All appliances are brand new stainless steel.

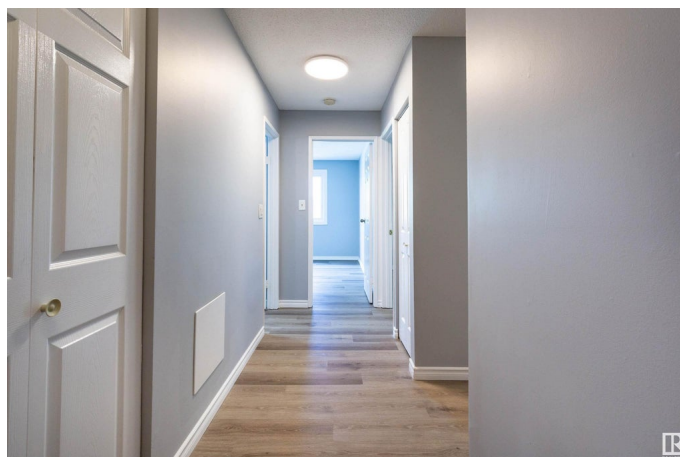
Built in 1979

Essential Information

MLS® #	E4446758
Price	\$129,900
Bedrooms	2
Bathrooms	1.00
Full Baths	1
Square Footage	816
Acres	0.00
Year Built	1979
Type	Condo / Townhouse
Sub-Type	Lowrise Apartment
Style	Single Level Apartment
Status	Active

Community Information

Address 207 12404 161 Avenue



Area	Edmonton
Subdivision	Dunluce
City	Edmonton
County	ALBERTA
Province	AB
Postal Code	T5X 4W6

Amenities

Amenities	Detectors Smoke
Parking	Stall

Interior

Appliances	Dishwasher-Built-In, Hood Fan, Refrigerator-Energy Star, Stove-Electric
Heating	Forced Air-1, Natural Gas
# of Stories	3
Stories	1
Has Basement	Yes
Basement	None, No Basement

Exterior

Exterior	Wood, Vinyl
Exterior Features	Picnic Area, Playground Nearby, Public Swimming Pool, Public Transportation, Schools, Shopping Nearby
Roof	Asphalt Shingles
Construction	Wood, Vinyl
Foundation	Concrete Perimeter

Additional Information

Date Listed	July 9th, 2025
Days on Market	66
Zoning	Zone 27
Condo Fee	\$535

DATA IS DEEMED RELIABLE BUT IS NOT GUARANTEED ACCURATE BY THE REALTORS® ASSOCIATION OF EDMONTON. COPYRIGHT 2025 BY THE REALTORS® ASSOCIATION OF EDMONTON. ALL RIGHTS RESERVED. Trademarks are owned or controlled by the Canadian Real Estate Association (CREA) and identify real estate professionals who are members of CREA (REALTOR®, REALTORS®) and/or the quality of services they provide (MLS®, Multiple Listing Service®)

Listing information last updated on September 13th, 2025 at 1:17pm MDT