

## \$199,900 - 292 Lancaster Terrace, Edmonton

MLS® #E4446568

**\$199,900**

3 Bedroom, 1.50 Bathroom, 1,101 sqft

Condo / Townhouse on 0.00 Acres

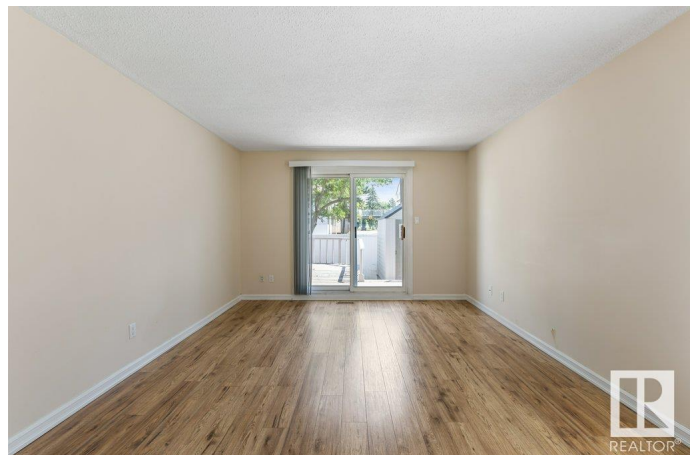
Dunluce, Edmonton, AB

Welcome to this spacious & affordable bungalow-style carriage home, nestled in the heart of the Dunluce community. Perfect for families, this home offers a smart, functional layout & an abundance of natural light throughout. The bright living room features a cozy fireplace, large patio doors that open to a generous, fully fenced backyard—ideal for kids, pets, or entertaining guests. The kitchen is both practical and stylish with ample cabinetry, plenty of counter space, & newer stainless steel appliances. The primary bedroom includes a private 2-piece ensuite, while two additional well-sized bedrooms offer flexibility for a growing family or home office space. A 4-pc bathroom and convenient in-suite laundry area complete the interior. Step outside to enjoy a large deck, raised garden beds perfect for your green thumb, & a durable resin garden shed for extra storage. Ideally located near green spaces, parks, schools, & the YMCA recreation centre, this home offers comfort, value, and community!

Built in 1977

### Essential Information

MLS® #	E4446568
Price	\$199,900
Bedrooms	3



Bathrooms	1.50
Full Baths	1
Half Baths	1
Square Footage	1,101
Acres	0.00
Year Built	1977
Type	Condo / Townhouse
Sub-Type	Townhouse
Style	Bungalow
Status	Active

### Community Information

Address	292 Lancaster Terrace
Area	Edmonton
Subdivision	Dunluce
City	Edmonton
County	ALBERTA
Province	AB
Postal Code	T5X 5T7

### Amenities

Amenities	Deck, Parking-Visitor
Parking	Stall

### Interior

Interior Features	ensuite bathroom
Appliances	Dishwasher-Built-In, Dryer, Microwave Hood Fan, Refrigerator, Stove-Electric, Washer, Window Coverings, TV Wall Mount
Heating	Forced Air-1, Natural Gas
Stories	1
Has Basement	Yes
Basement	None, No Basement

### Exterior

Exterior	Wood, Stucco, Vinyl
Exterior Features	Fenced, Landscaped, Playground Nearby, Public Transportation, Schools, Shopping Nearby
Roof	Asphalt Shingles
Construction	Wood, Stucco, Vinyl

Foundation                      Concrete Perimeter

**Additional Information**

Date Listed                      July 8th, 2025  
Days on Market                10  
Zoning                              Zone 27  
Condo Fee                        \$425

DATA IS DEEMED RELIABLE BUT IS NOT GUARANTEED ACCURATE BY THE REALTORS® ASSOCIATION OF EDMONTON. COPYRIGHT 2025 BY THE REALTORS® ASSOCIATION OF EDMONTON. ALL RIGHTS RESERVED.Trademarks are owned or controlled by the Canadian Real Estate Association (CREA) and identify real estate professionals who are members of CREA (REALTOR®, REALTORS®) and/or the quality of services they provide (MLS®, Multiple Listing Service®)  
Listing information last updated on July 18th, 2025 at 8:17pm MDT