

## \$94,800 - 710 10024 Jasper Avenue, Edmonton

MLS® #E4445925

**\$94,800**

1 Bedroom, 1.00 Bathroom, 414 sqft

Condo / Townhouse on 0.00 Acres

Downtown (Edmonton), Edmonton, AB

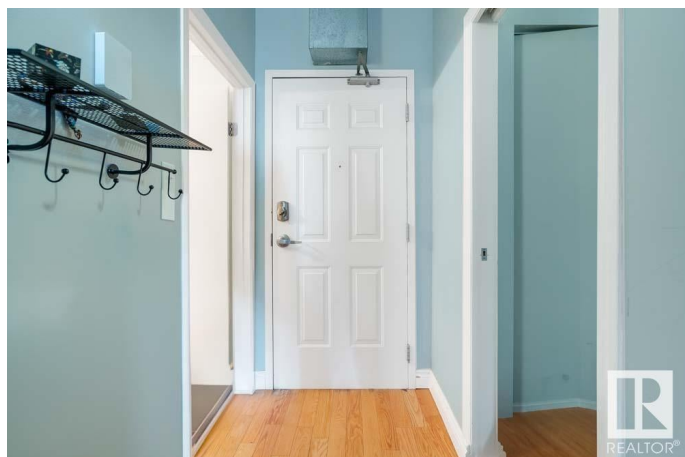
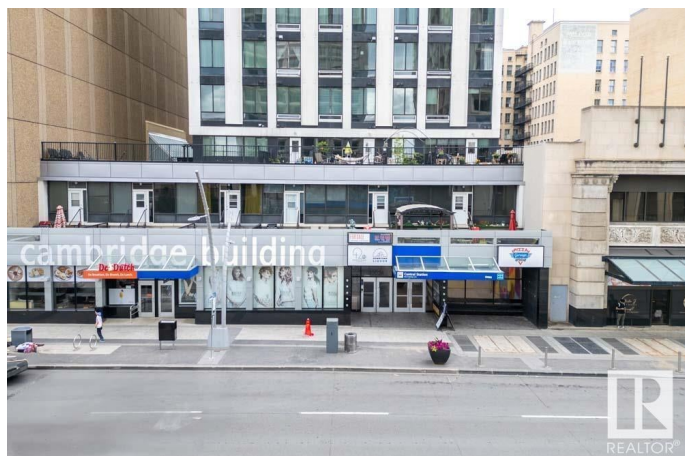
### DOWNTOWN LIVING WITH LOFT VIBES!

This stylish 1 BEDROOM condo in the heart of Edmonton offers an URBAN LIFESTYLE at an AFFORDABLE PRICE. Featuring warm HARDWOOD FLOORS, LOFT-STYLE EXPOSED CONCRETE CEILINGS, and an open-concept layout, this unit is perfect for professionals, students, or investors. The spacious living and dining areas are filled with NATURAL LIGHT, while the efficient kitchen layout makes great use of space. A large bedroom with full closet, 4PC BATH, and convenient IN-SUITE LAUNDRY complete the unit. Located right on JASPER AVENUE with easy access to the LRT, shopping, dining, nightlife, and downtown business district—everything you need is just steps away. Whether you're starting out or adding to your portfolio, this is a smart move in a VIBRANT URBAN SETTING!

Built in 1968

### Essential Information

MLS® #	E4445925
Price	\$94,800
Bedrooms	1
Bathrooms	1.00
Full Baths	1
Square Footage	414



Acres	0.00
Year Built	1968
Type	Condo / Townhouse
Sub-Type	Apartment High Rise
Style	Single Level Apartment
Status	Active

### **Community Information**

Address	710 10024 Jasper Avenue
Area	Edmonton
Subdivision	Downtown (Edmonton)
City	Edmonton
County	ALBERTA
Province	AB
Postal Code	T5J 1R9

### **Amenities**

Amenities	On Street Parking, Ceiling 10 ft., Security Door
Parking	No Parking

### **Interior**

Appliances	Dishwasher-Built-In, Refrigerator, Stacked Washer/Dryer, Stove-Electric
Heating	Baseboard, Natural Gas
# of Stories	18
Stories	1
Has Basement	Yes
Basement	None, No Basement

### **Exterior**

Exterior	Concrete
Exterior Features	Public Transportation, River Valley View, Shopping Nearby, View City, View Downtown
Roof	Tar & Gravel
Construction	Concrete
Foundation	Concrete Perimeter

### **Additional Information**

Date Listed	July 4th, 2025
Days on Market	71

Zoning	Zone 12
Condo Fee	\$337

DATA IS DEEMED RELIABLE BUT IS NOT GUARANTEED ACCURATE BY THE REALTORS® ASSOCIATION OF EDMONTON. COPYRIGHT 2025 BY THE REALTORS® ASSOCIATION OF EDMONTON. ALL RIGHTS RESERVED. Trademarks are owned or controlled by the Canadian Real Estate Association (CREA) and identify real estate professionals who are members of CREA (REALTOR®, REALTORS®) and/or the quality of services they provide (MLS®, Multiple Listing Service®)

Listing information last updated on September 13th, 2025 at 5:02am MDT