

## \$425,000 - 1909 24 Street, Edmonton

MLS® #E4443835

**\$425,000**

4 Bedroom, 3.50 Bathroom, 1,455 sqft

Single Family on 0.00 Acres

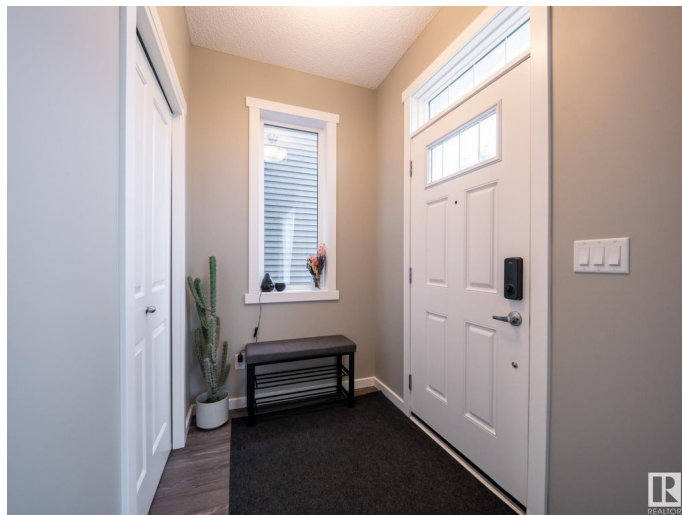
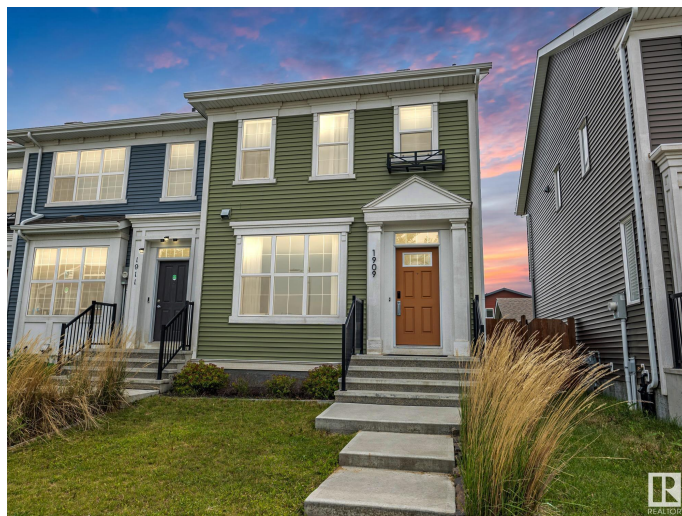
Laurel, Edmonton, AB

Looking for style, space, and a place that just fits? This Laurel townhome has the look, the layout, and the location! The kitchen shines with sleek cabinets, quartz counters, stainless steel appliances, tile backsplash, and an eat-in island—all open to the dining area. The bright living room features large windows and a beautiful fireplace. Upstairs, the primary bedroom includes a walk-in closet and 3-piece ensuite with stand-up shower. Two more bedrooms and a full bath complete the upper floor. The finished basement adds a spacious family room, 4th bedroom, full bath, laundry, and storage. With a fully landscaped yard, deck, and double detached garage, this END unit is the whole package!

Built in 2018

### Essential Information

MLS® #	E4443835
Price	\$425,000
Bedrooms	4
Bathrooms	3.50
Full Baths	3
Half Baths	1
Square Footage	1,455
Acres	0.00
Year Built	2018



Type	Single Family
Sub-Type	Residential Attached
Style	2 Storey
Status	Active

### Community Information

Address	1909 24 Street
Area	Edmonton
Subdivision	Laurel
City	Edmonton
County	ALBERTA
Province	AB
Postal Code	T6T 2C9

### Amenities

Amenities	Air Conditioner, Carbon Monoxide Detectors, Ceiling 9 ft., Deck, Detectors Smoke, Smart/Program. Thermostat, Vinyl Windows
Parking	Double Garage Detached

### Interior

Interior Features	ensuite bathroom
Appliances	Air Conditioning-Central, Dishwasher-Built-In, Dryer, Microwave Hood Fan, Refrigerator, Stove-Electric, Washer
Heating	Forced Air-1, Natural Gas
Stories	3
Has Basement	Yes
Basement	Full, Finished

### Exterior

Exterior	Wood, Vinyl
Exterior Features	Back Lane, Fenced, Landscaped, Playground Nearby, Public Transportation, Schools, Shopping Nearby
Roof	Asphalt Shingles
Construction	Wood, Vinyl
Foundation	Concrete Perimeter

### Additional Information

Date Listed	June 23rd, 2025
Days on Market	14
Zoning	Zone 30

DATA IS DEEMED RELIABLE BUT IS NOT GUARANTEED ACCURATE BY THE REALTORS® ASSOCIATION OF EDMONTON. COPYRIGHT 2025 BY THE REALTORS® ASSOCIATION OF EDMONTON. ALL RIGHTS RESERVED.Trademarks are owned or controlled by the Canadian Real Estate Association (CREA) and identify real estate professionals who are members of CREA (REALTOR®, REALTORS®) and/or the quality of services they provide (MLS®, Multiple Listing Service®)

Listing information last updated on July 7th, 2025 at 7:02am MDT