

\$179,900 - 309 10404 24 Avenue, Edmonton

MLS® #E4442840

\$179,900

2 Bedroom, 1.50 Bathroom, 1,092 sqft
Condo / Townhouse on 0.00 Acres

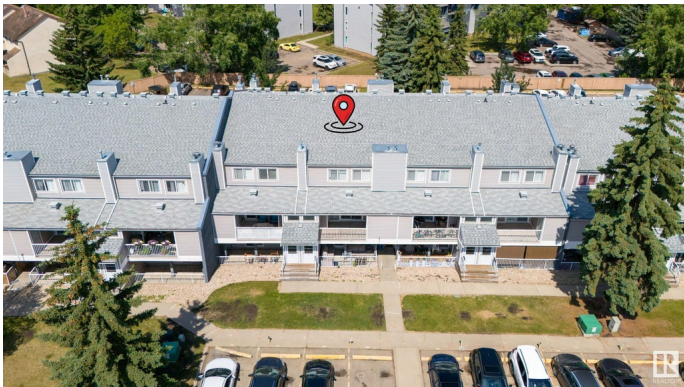
Ermineskin, Edmonton, AB

Welcome to this beautiful bungalow-style townhouse in the desirable community of Ermineskin, offering huge living space. This well-designed home features 2 spacious bedrooms, 1.5 bathrooms, an open-concept kitchen, living and dining area, and convenient in-suite laundry. The location is unbeatable—just minutes away from South Common, Century Park LRT, shopping centres, Anthony Henday, and top-rated schools. This well-managed complex has very low condo fees, making it a smart and affordable choice.

Built in 1978

Essential Information

MLS® #	E4442840
Price	\$179,900
Bedrooms	2
Bathrooms	1.50
Full Baths	1
Half Baths	1
Square Footage	1,092
Acres	0.00
Year Built	1978
Type	Condo / Townhouse
Sub-Type	Carriage
Style	Bungalow



Status Active

Community Information

Address 309 10404 24 Avenue
Area Edmonton
Subdivision Ermineskin
City Edmonton
County ALBERTA
Province AB
Postal Code T6J 4J7

Amenities

Amenities Carbon Monoxide Detectors, Parking-Visitor
Parking Stall

Interior

Interior Features ensuite bathroom
Appliances Dishwasher-Built-In, Dryer, Refrigerator, Stove-Electric, Washer
Heating Forced Air-1, Natural Gas
Stories 1
Has Basement Yes
Basement None, No Basement

Exterior

Exterior Wood, Vinyl
Exterior Features Golf Nearby, Landscaped, Schools, Shopping Nearby
Roof Asphalt Shingles
Construction Wood, Vinyl
Foundation Concrete Perimeter

Additional Information

Date Listed June 17th, 2025
Days on Market 78
Zoning Zone 16
Condo Fee \$245

DATA IS DEEMED RELIABLE BUT IS NOT GUARANTEED ACCURATE BY THE REALTORS® ASSOCIATION OF EDMONTON. COPYRIGHT 2025 BY THE REALTORS® ASSOCIATION OF EDMONTON. ALL RIGHTS RESERVED. Trademarks are owned or controlled by the Canadian Real Estate Association (CREA) and identify real estate professionals who are members of CREA (REALTOR®, REALTORS®) and/or the quality of services they provide (MLS®, Multiple Listing Service®)

Listing information last updated on September 3rd, 2025 at 3:32pm MDT