

\$249,900 - 320 Spruce Ridge Road, Spruce Grove

MLS® #E4441920

\$249,900

3 Bedroom, 2.00 Bathroom, 1,003 sqft
Condo / Townhouse on 0.00 Acres

Spruce Ridge, Spruce Grove, AB

Experience living in the wonderful community of Spruce Ridge. This lovely townhouse has 3 bedrooms 1.5 bathrooms. Two assigned parking stalls, the Basement is ready to be finished to your personal touch. The home features Air Conditioning, a deck and is walking distance to spruce ridge park.

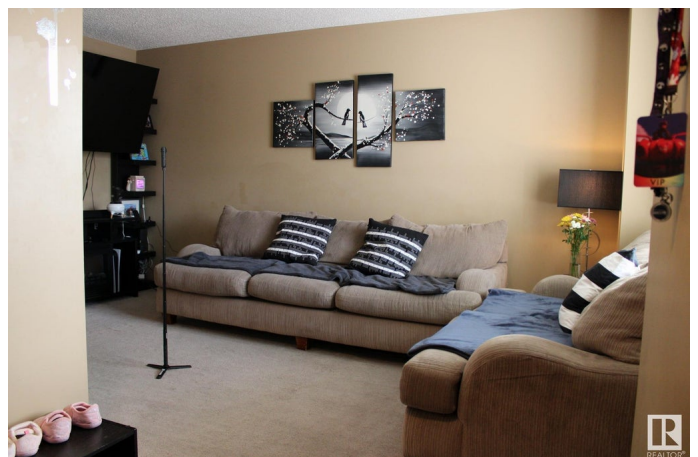
Built in 2011

Essential Information

| | |
|----------------|-------------------|
| MLS® # | E4441920 |
| Price | \$249,900 |
| Bedrooms | 3 |
| Bathrooms | 2.00 |
| Full Baths | 2 |
| Square Footage | 1,003 |
| Acres | 0.00 |
| Year Built | 2011 |
| Type | Condo / Townhouse |
| Sub-Type | Townhouse |
| Style | 2 Storey |
| Status | Active |

Community Information

| | |
|-------------|-----------------------|
| Address | 320 Spruce Ridge Road |
| Area | Spruce Grove |
| Subdivision | Spruce Ridge |



| | |
|-------------|--------------|
| City | Spruce Grove |
| County | ALBERTA |
| Province | AB |
| Postal Code | T7X 0H5 |

Amenities

| | |
|-----------|-----------------------|
| Amenities | Air Conditioner, Deck |
| Parking | 2 Outdoor Stalls |

Interior

| | |
|--------------|--|
| Appliances | Air Conditioning-Central, Dishwasher-Built-In, Dryer, Refrigerator, Stove-Electric, Washer |
| Heating | Forced Air-1, Natural Gas |
| Stories | 2 |
| Has Basement | Yes |
| Basement | Full, Unfinished |

Exterior

| | |
|-------------------|--------------------|
| Exterior | Wood, Vinyl |
| Exterior Features | Back Lane, Fenced |
| Roof | Asphalt Shingles |
| Construction | Wood, Vinyl |
| Foundation | Concrete Perimeter |

Additional Information

| | |
|----------------|-----------------|
| Date Listed | June 12th, 2025 |
| Days on Market | 4 |
| Zoning | Zone 91 |
| Condo Fee | \$308 |

DATA IS DEEMED RELIABLE BUT IS NOT GUARANTEED ACCURATE BY THE REALTORS® ASSOCIATION OF EDMONTON. COPYRIGHT 2025 BY THE REALTORS® ASSOCIATION OF EDMONTON. ALL RIGHTS RESERVED.Trademarks are owned or controlled by the Canadian Real Estate Association (CREA) and identify real estate professionals who are members of CREA (REALTOR®, REALTORS®) and/or the quality of services they provide (MLS®, Multiple Listing Service®)

Listing information last updated on June 16th, 2025 at 7:02am MDT