

\$239,000 - 416 2510 109 Street, Edmonton

MLS® #E4441075

\$239,000

1 Bedroom, 1.00 Bathroom, 748 sqft

Condo / Townhouse on 0.00 Acres

Ermineskin, Edmonton, AB

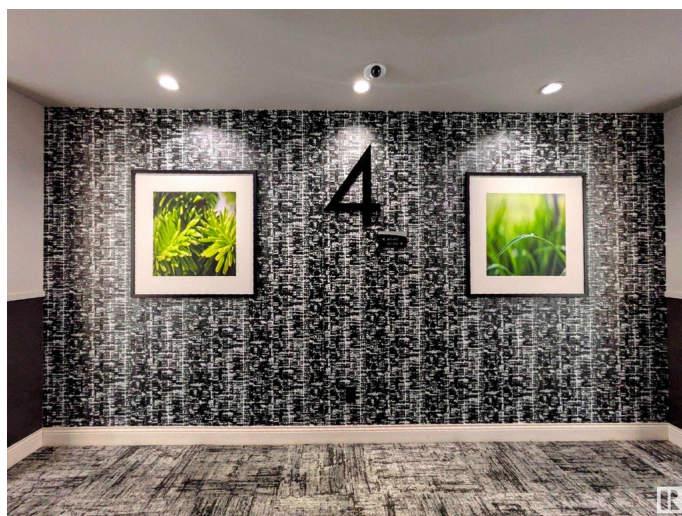
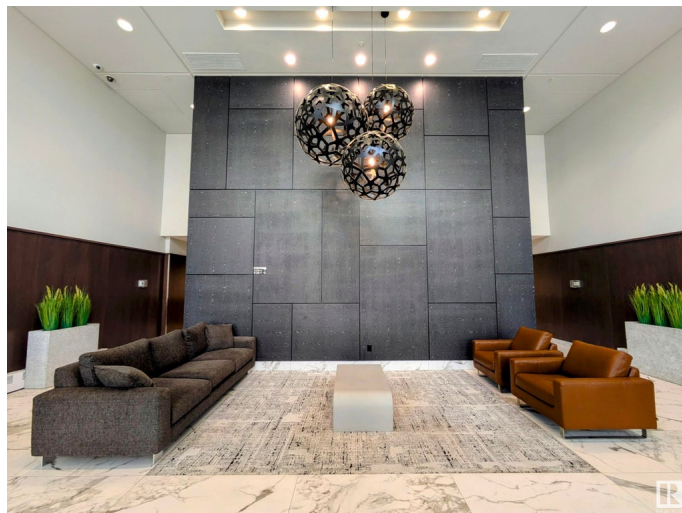
Welcome to this Spacious 747 sq.ft., Air Conditioned, One Bdrm Condo at Century Park. Condo fee includes all utilities (Heat/Water/Elec/Internet). Foyer and halls are Beautifully Decorated. As you enter, you'll find a Luxurious Center Kitchen w/ Granite Countertops, S/S appliances - Gas Cooktop, Oven, Full Size Fridge w/ water & ice, OTR Microwave, Dishwasher & plenty of Cabinet Space. The Dining Room next to it is perfect for Entertaining. The Living Room has Large Windows & Cozy Fireplace. Balcony is Large w/ Gas BBQ hookup & Views of green space. The Bedroom fits a King Bed & Bedside Tables. Walkthrough the His & Hers Closets & into the Spa-like 4pc. Bath w/ Glass Shower & Large Soaker Tub. Hardwood & Tile Flooring Throughout. In-suite stacked laundry completes the unit. Garbage Chute down the hall. Titled Underground Prkg, Titled Storage. Amenities: Heated Visitor Parking, Bike Room, Gym, Green Space & Playground. Steps to restaurants, shops, medical centres & Century Park LRT Station.

Built in 2008

Essential Information

MLS® # E4441075

Price \$239,000



Bedrooms	1
Bathrooms	1.00
Full Baths	1
Square Footage	748
Acres	0.00
Year Built	2008
Type	Condo / Townhouse
Sub-Type	Lowrise Apartment
Style	Single Level Apartment
Status	Active

Community Information

Address	416 2510 109 Street
Area	Edmonton
Subdivision	Ermineskin
City	Edmonton
County	ALBERTA
Province	AB
Postal Code	T6J 2X1

Amenities

Amenities	Air Conditioner, Exercise Room, Intercom, Parking-Visitor, Storage-Locker Room, Natural Gas BBQ Hookup, Natural Gas Stove Hookup
Parking Spaces	1
Parking	Heated, Parkade, Underground, See Remarks

Interior

Interior Features	ensuite bathroom
Appliances	Dishwasher-Built-In, Garage Control, Microwave Hood Fan, Oven-Built-In, Refrigerator-Energy Star, Stacked Washer/Dryer, Stove-Countertop Gas, Window Coverings, TV Wall Mount
Heating	Heat Pump, Natural Gas
Fireplace	Yes
Fireplaces	Tile Surround
# of Stories	7
Stories	7
Has Basement	Yes
Basement	None, No Basement

Exterior

Exterior	Concrete, Brick, Metal			
Exterior Features	Low Maintenance	Landscape, Transportation, Shopping Nearby	Playground Nearby,	Public
Roof	See Remarks			
Construction	Concrete, Brick, Metal			
Foundation	Concrete Perimeter			

Additional Information

Date Listed	June 6th, 2025
Days on Market	10
Zoning	Zone 16
Condo Fee	\$711

DATA IS DEEMED RELIABLE BUT IS NOT GUARANTEED ACCURATE BY THE REALTORS® ASSOCIATION OF EDMONTON. COPYRIGHT 2025 BY THE REALTORS® ASSOCIATION OF EDMONTON. ALL RIGHTS RESERVED.Trademarks are owned or controlled by the Canadian Real Estate Association (CREA) and identify real estate professionals who are members of CREA (REALTOR®, REALTORS®) and/or the quality of services they provide (MLS®, Multiple Listing Service®)

Listing information last updated on June 16th, 2025 at 3:47pm MDT