

\$649,000 - 23 Granville Crescent, Sherwood Park

MLS® #E4440581

\$649,000

6 Bedroom, 3.00 Bathroom, 1,354 sqft

Single Family on 0.00 Acres

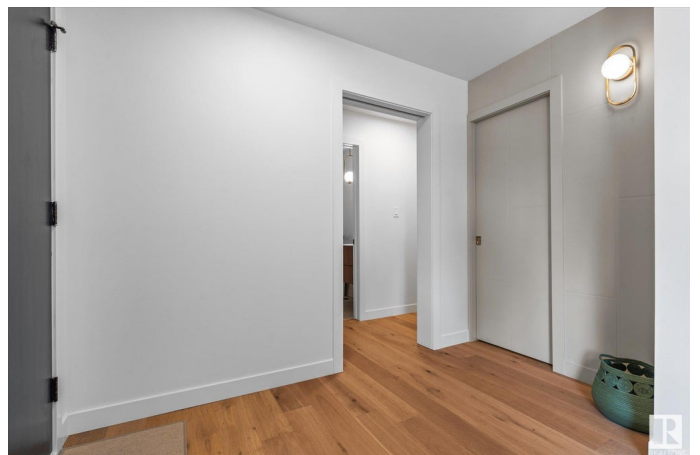
Glen Allan, Sherwood Park, AB

This fully updated 6-bedroom, 3-bath home blends midcentury charm with timeless style, featuring a fluted island, quartz countertops with full slab backsplash, gas range, engineered hardwood floors, and stainless steel appliances. The bright and timeless main floor includes a custom built-in fireplace, while the basement—offers soundproofing, plush carpeting and 3 more large bedrooms, a full bath, an electric fireplace, a spacious wet bar, and a massive walk-in pantry/storage area. The luxurious primary suite boasts a wet-room with a walk-in shower and separate tub. Additional upgrades include new windows, updated plumbing and electrical, newer furnace, new hot water tank, laundry on both levels, and an oversized double garage. Located in a quiet, mature neighborhood close to schools and shopping, this home is ideal for families or investors looking for move-in-ready value.

Built in 1972

Essential Information

MLS® #	E4440581
Price	\$649,000
Bedrooms	6
Bathrooms	3.00



Full Baths	3
Square Footage	1,354
Acres	0.00
Year Built	1972
Type	Single Family
Sub-Type	Detached Single Family
Style	Bungalow
Status	Active

Community Information

Address	23 Granville Crescent
Area	Sherwood Park
Subdivision	Glen Allan
City	Sherwood Park
County	ALBERTA
Province	AB
Postal Code	T8B 0B1

Amenities

Amenities	Carbon Monoxide Detectors, Detectors Smoke, Hot Water Natural Gas, No Smoking Home, Wet Bar
Parking	Double Garage Detached, Front Drive Access

Interior

Interior Features	ensuite bathroom
Appliances	Hood Fan, Stove-Gas, Refrigerators-Two, Dishwasher-Two
Heating	Forced Air-1, Natural Gas
Fireplace	Yes
Fireplaces	Glass Door
Stories	2
Has Basement	Yes
Basement	Full, Finished

Exterior

Exterior	Wood, Brick, Stucco, Vinyl
Exterior Features	Landscaped, Low Maintenance Landscape, No Back Lane, Playground Nearby, Schools, Shopping Nearby, Partially Fenced
Roof	Asphalt Shingles
Construction	Wood, Brick, Stucco, Vinyl

Foundation Concrete Perimeter

School Information

Elementary Glen Allen Elementary

Additional Information

Date Listed June 5th, 2025

Days on Market 11

Zoning Zone 25

DATA IS DEEMED RELIABLE BUT IS NOT GUARANTEED ACCURATE BY THE REALTORS® ASSOCIATION OF EDMONTON. COPYRIGHT 2025 BY THE REALTORS® ASSOCIATION OF EDMONTON. ALL RIGHTS RESERVED.Trademarks are owned or controlled by the Canadian Real Estate Association (CREA) and identify real estate professionals who are members of CREA (REALTOR®, REALTORS®) and/or the quality of services they provide (MLS®, Multiple Listing Service®)

Listing information last updated on June 16th, 2025 at 8:02pm MDT