

\$319,900 - 30 2004 Trumpeter Way, Edmonton

MLS® #E4436708

\$319,900

3 Bedroom, 2.50 Bathroom, 1,103 sqft

Condo / Townhouse on 0.00 Acres

Trumpeter Area, Edmonton, AB

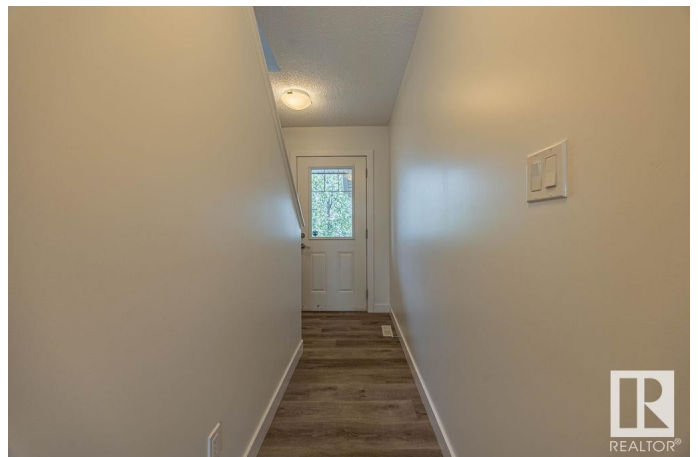
Enjoy this home with FULLY FINISHED basement and say no to cutting grass and shovelling snow! Condo fees include ALL maintenance - you have a fully fenced yard and your condo fees INCLUDE maintenance inside the fully fenced area (very rare). Seeding, mowing, front & back yard, nothing for you to do at all! That's rare and means 100% no maintenance. Snow shovelling is done right up to your front door! Privacy + zero maintenance = lifestyle perfection. All BRAND NEW vinyl plank flooring installed on November 10/2021. DOG FRIENDLY: no restriction on size or breed of dog. 2 dogs allowed per home. Trumpeter boasts landscaped parks, ponds, woody ravines, creeks, lakes & trails, 2 blocks to Horseshoe Lake & ravine, 4 blocks to Glendale & Dragons Head golf courses. Attached single garage, 3 bedrooms, 2.5 baths. 4 piece master ensuite. Stainless steel appliances. Quartz countertops. Designer light fixtures. Condo fees of only \$386.36 incl ALL EXTERIOR MAINTENANCE. Taxes \$2843.57/yr.

Built in 2014

Essential Information

MLS® # E4436708

Price \$319,900



Bedrooms	3
Bathrooms	2.50
Full Baths	2
Half Baths	1
Square Footage	1,103
Acres	0.00
Year Built	2014
Type	Condo / Townhouse
Sub-Type	Townhouse
Style	2 Storey
Status	Active

Community Information

Address	30 2004 Trumpeter Way
Area	Edmonton
Subdivision	Trumpeter Area
City	Edmonton
County	ALBERTA
Province	AB
Postal Code	T5S 0J9

Amenities

Amenities	Deck
Parking	Single Garage Attached

Interior

Interior Features	ensuite bathroom
Appliances	Dishwasher-Built-In, Dryer, Garage Control, Garage Opener, Microwave Hood Fan, Refrigerator, Stove-Electric, Washer, Window Coverings
Heating	Forced Air-1, Natural Gas
Stories	2
Has Basement	Yes
Basement	Full, Finished

Exterior

Exterior	Wood, Stone, Vinyl
Exterior Features	Fenced, Flat Site, Golf Nearby, Landscaped, Public Transportation, Schools, Shopping Nearby
Roof	Asphalt Shingles

Construction	Wood, Stone, Vinyl
Foundation	Concrete Perimeter

School Information

Elementary	DT King, Annunciation
Middle	DT King, St Thomas More
High	Jasper Place, St. FX

Additional Information

Date Listed	May 15th, 2025
Days on Market	10
Zoning	Zone 59
Condo Fee	\$386

DATA IS DEEMED RELIABLE BUT IS NOT GUARANTEED ACCURATE BY THE REALTORS® ASSOCIATION OF EDMONTON. COPYRIGHT 2025 BY THE REALTORS® ASSOCIATION OF EDMONTON. ALL RIGHTS RESERVED. Trademarks are owned or controlled by the Canadian Real Estate Association (CREA) and identify real estate professionals who are members of CREA (REALTOR®, REALTORS®) and/or the quality of services they provide (MLS®, Multiple Listing Service®)

Listing information last updated on May 24th, 2025 at 10:17pm MDT