

Courtesy Of Leah-Mel B Icalla Of MaxWell Polaris

\$224,900 - 117 16344 109 Street, Edmonton

MLS® #E4435670

\$224,900

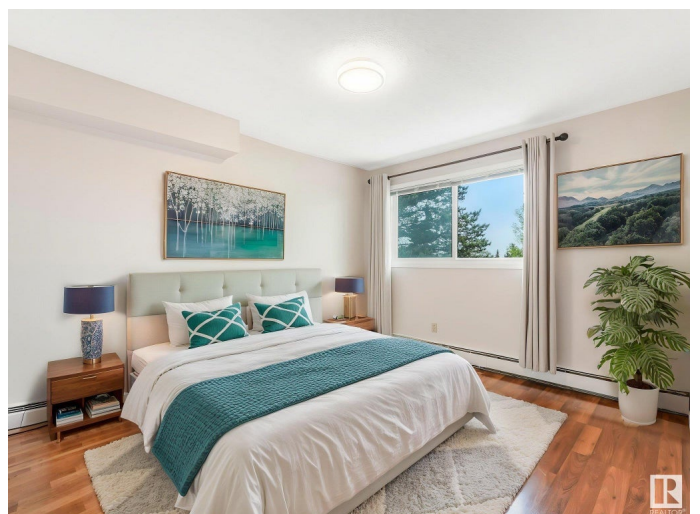
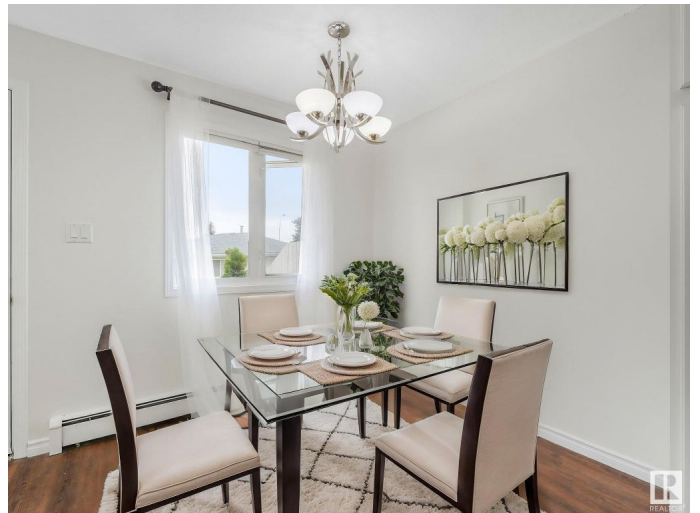
4 Bedroom, 1.50 Bathroom, 1,088 sqft
Condo / Townhouse on 0.00 Acres

Lorelei, Edmonton, AB

This FRESHLY UPDATED, FULLY FINISHED 3-bedroom + FAMILY ROOM + DEN, 1.5-BATH twnhse offers unbeatable value in a family-friendly location. The bright main floor features a VERY SPACIOUS & LIGHT-SUNKEN living room, AIRY & FUNCTIONAL kitchen w/ ample STORAGE in your EXTENDED CABINETS, QUARTZ counters & GLASS backsplash, SS APPLIANCES, next your dining area, & a CONVENIENT 2-PC BATH. Upstairs, enjoy a vaulted ceiling in the primary bedroom, 2 additional cozy bedrooms, & a gorgeous full 4-piece bathroom. The FNSHD BSMT includes laundry area, FAMILY ROOM, a CLOSED DEN/OFFICE & a STORAGE ROOM. CONDO FEES COVER HEAT & WATER/SEWER, adding to the LOW-MAINTENANCE lifestyle. With a PRIVATE FENCED YARD, 2 FRONT PARKING STALLS, & a playground w/in the complex, this home is ideal for families, first-time buyers, or investors. Situated steps from SCHOOLS, DAYCARE, PUBLIC TRANSIT, & just minutes to shopping & Anthony Henday Drive—this location offers convenience & community. Donâ€™t miss out on this turnkey opportunity!

Built in 1977

Essential Information



MLS® #	E4435670
Price	\$224,900
Bedrooms	4
Bathrooms	1.50
Full Baths	1
Half Baths	1
Square Footage	1,088
Acres	0.00
Year Built	1977
Type	Condo / Townhouse
Sub-Type	Townhouse
Style	2 Storey
Status	Active

Community Information

Address	117 16344 109 Street
Area	Edmonton
Subdivision	Lorelei
City	Edmonton
County	ALBERTA
Province	AB
Postal Code	T5X 2T4

Amenities

Amenities	On Street Parking, Detectors Smoke, Intercom, No Animal Home, No Smoking Home, Parking-Extra, Parking-Plug-Ins, Parking-Visitor
Parking Spaces	2
Parking	2 Outdoor Stalls, Stall

Interior

Appliances	Dishwasher-Built-In, Dryer, Refrigerator, Stove-Electric, Washer
Heating	Baseboard, Water
Stories	3
Has Basement	Yes
Basement	Full, Finished

Exterior

Exterior	Wood, Stucco, Vinyl
Exterior Features	Fenced, Landscaped, Park/Reserve, Playground Nearby, Public

	Transportation, Schools, Shopping Nearby
Roof	Asphalt Shingles
Construction	Wood, Stucco, Vinyl
Foundation	Concrete Perimeter

School Information

Elementary	Lorelei School
Middle	Mary Butterworth School
High	Queen Elizabeth School

Additional Information

Date Listed	May 9th, 2025
Days on Market	3
Zoning	Zone 27
Condo Fee	\$607

DATA IS DEEMED RELIABLE BUT IS NOT GUARANTEED ACCURATE BY THE REALTORS® ASSOCIATION OF EDMONTON. COPYRIGHT 2025 BY THE REALTORS® ASSOCIATION OF EDMONTON. ALL RIGHTS RESERVED. Trademarks are owned or controlled by the Canadian Real Estate Association (CREA) and identify real estate professionals who are members of CREA (REALTOR®, REALTORS®) and/or the quality of services they provide (MLS®, Multiple Listing Service®)

Listing information last updated on May 12th, 2025 at 7:47pm MDT