

\$239,900 - 214 10033 110 Street, Edmonton

MLS® #E4434527

\$239,900

2 Bedroom, 1.00 Bathroom, 874 sqft

Condo / Townhouse on 0.00 Acres

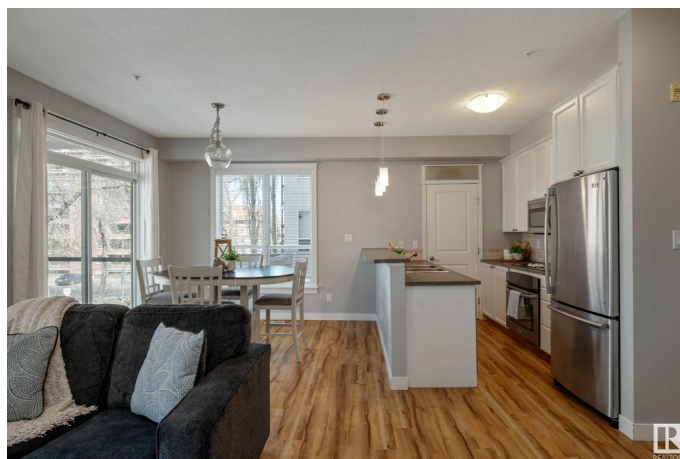
W&hkw&antwin, Edmonton, AB

This bright and beautiful END UNIT condo has a great open concept layout with an updated kitchen, dining area with plenty of room for a full table, and a large living room complete with a cozy electric fireplace. Both bedrooms have ample closets, and the 2nd bedroom is complete with built in cabinetry and shelving. The large bathroom features a rainfall, fully tiled shower and plenty of storage space. Enjoy warm evenings on the large west facing balcony overlooking the mature tree lined street! Features include: IN SUITE LAUNDRY, TITLED UNDERGROUND PARKING, gas line for a BBQ, A/C, and updated fixtures. AMAZING WALKABILITY AND LOCATION- only steps to numerous amenities, Grant Macewan, the river valley trail system and bus stops/LRT stations.

Built in 1999

Essential Information

MLS® #	E4434527
Price	\$239,900
Bedrooms	2
Bathrooms	1.00
Full Baths	1
Square Footage	874
Acres	0.00
Year Built	1999



Type	Condo / Townhouse
Sub-Type	Lowrise Apartment
Style	Single Level Apartment
Status	Active

Community Information

Address	214 10033 110 Street
Area	Edmonton
Subdivision	W&hkw&nt&win
City	Edmonton
County	ALBERTA
Province	AB
Postal Code	T5K 1J5

Amenities

Amenities	Deck, No Animal Home, No Smoking Home, Parking-Visitor, Secured Parking, Security Door, Sprinkler System-Fire, Natural Gas BBQ Hookup
Parking	Underground

Interior

Appliances	Dishwasher-Built-In, Dryer, Microwave Hood Fan, Refrigerator, Stove-Electric, Washer, Window Coverings
Heating	Forced Air-1, Natural Gas
# of Stories	4
Stories	1
Has Basement	Yes
Basement	None, No Basement

Exterior

Exterior	Wood, Stucco
Exterior Features	Golf Nearby, Landscaped, Park/Reserve, Public Transportation, Schools, Shopping Nearby, View City
Roof	Tar & Gravel
Construction	Wood, Stucco
Foundation	Concrete Perimeter

School Information

Elementary	Wihkwentowin School
Middle	Westminster School
High	Victoria School

Additional Information

Date Listed	May 5th, 2025
Days on Market	12
Zoning	Zone 12
Condo Fee	\$468

DATA IS DEEMED RELIABLE BUT IS NOT GUARANTEED ACCURATE BY THE REALTORS® ASSOCIATION OF EDMONTON. COPYRIGHT 2025 BY THE REALTORS® ASSOCIATION OF EDMONTON. ALL RIGHTS RESERVED.Trademarks are owned or controlled by the Canadian Real Estate Association (CREA) and identify real estate professionals who are members of CREA (REALTOR®, REALTORS®) and/or the quality of services they provide (MLS®, Multiple Listing Service®)

Listing information last updated on May 17th, 2025 at 8:47pm MDT