

\$399,900 - 1907 24 Street, Edmonton

MLS® #E4434433

\$399,900

4 Bedroom, 3.50 Bathroom, 1,497 sqft

Single Family on 0.00 Acres

Laurel, Edmonton, AB

No Condo Fees! Nestled in the sought-after Laurel community, this Homes by Avi end-unit offers nearly 2100sqft. of stylish, well-designed Living space. Featuring total 4 spacious bedrooms, including a master suite with a walk-in closet & en-suite, plus 3.5 bathrooms, this home is built for effortless living. The open-concept main floor boasts a chef's kitchen with upgraded stainless appliances, quartz countertops with an eating bar, and ample cabinetry. Huge living room with elegant Fireplace and feature wall adds a fine touch. Downstairs, the Finished Basement adds even more value, complete with a 4th bedroom, Full Washroom, and inviting Living space—perfect for guests or extra family room. Outside, enjoy a double detached garage/mancave—fully finished for your car and SUV. The backyard oasis features a deck and enough space to enjoy all summer. Close to parks, a new K-9 school, rec center, FREE park & ride—this immaculate, move-in-ready end-unit in Laurel is the one you've been waiting for!

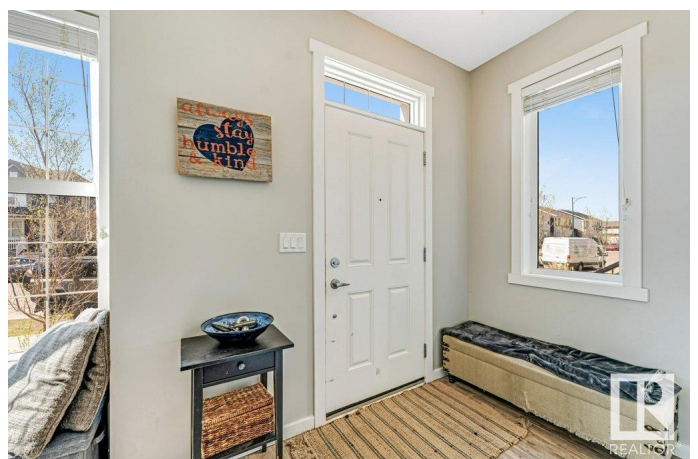
Built in 2018

Essential Information

MLS® # E4434433

Price \$399,900

Bedrooms 4



Bathrooms	3.50
Full Baths	3
Half Baths	1
Square Footage	1,497
Acres	0.00
Year Built	2018
Type	Single Family
Sub-Type	Residential Attached
Style	2 Storey
Status	Active

Community Information

Address	1907 24 Street
Area	Edmonton
Subdivision	Laurel
City	Edmonton
County	ALBERTA
Province	AB
Postal Code	T6T 2C9

Amenities

Amenities	Ceiling 9 ft., Detectors Smoke
Parking	Double Garage Detached

Interior

Interior Features	ensuite bathroom
Appliances	Dishwasher-Built-In, Dryer, Garage Control, Garage Opener, Refrigerator, Stove-Electric, Washer, Window Coverings
Heating	Forced Air-1, Natural Gas
Fireplace	Yes
Fireplaces	Mantel
Stories	3
Has Basement	Yes
Basement	Full, Finished

Exterior

Exterior	Wood, Vinyl
Exterior Features	Back Lane, Commercial, Fenced, Landscaped, Playground Nearby, Public Swimming Pool, Public Transportation, Schools, Shopping

	Nearby
Roof	Asphalt Shingles
Construction	Wood, Vinyl
Foundation	Concrete Perimeter

Additional Information

Date Listed	May 4th, 2025
Days on Market	2
Zoning	Zone 30

DATA IS DEEMED RELIABLE BUT IS NOT GUARANTEED ACCURATE BY THE REALTORS® ASSOCIATION OF EDMONTON. COPYRIGHT 2025 BY THE REALTORS® ASSOCIATION OF EDMONTON. ALL RIGHTS RESERVED. Trademarks are owned or controlled by the Canadian Real Estate Association (CREA) and identify real estate professionals who are members of CREA (REALTOR®, REALTORS®) and/or the quality of services they provide (MLS®, Multiple Listing Service®)

Listing information last updated on May 6th, 2025 at 8:02pm MDT