

\$269,000 - 1316 7339 South Terwillegar Drive, Edmonton

MLS® #E4434371

\$269,000

2 Bedroom, 2.00 Bathroom, 1,302 sqft
Condo / Townhouse on 0.00 Acres

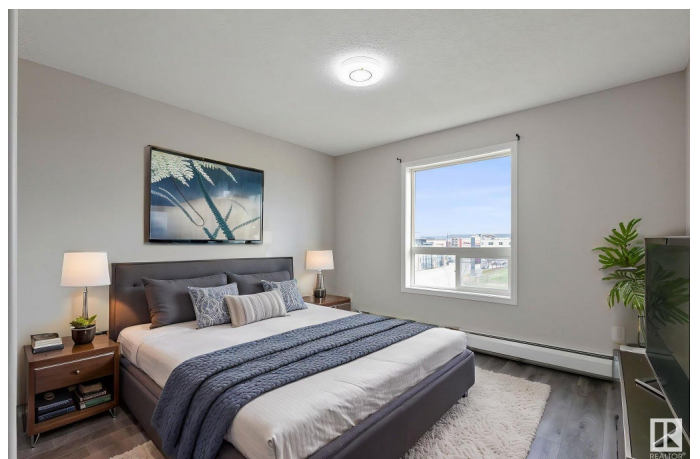
South Terwillegar, Edmonton, AB

This Exclusive Corner Unit Penthouse Condo with 2nd level Loft features 17' Vaulted ceilings, large windows bringing Sun light in. Open Concept design, overlook the Grand living/ Dining room from the Kitchen complete with Modern Finishes. Recent renovations include Vinyl Flooring, new Kitchen, Countertops with eating bar & newer Stainless-Steel Appliances. A generous sized Primary Bedroom also offers a Walk-through Closet and 3piece Ensuite Bath. A second Bedroom, located on the other end of the unit, along with another 3piece bath. Loft space allows for an additional Flex Space, for a Home office, Yoga/ Home Gym, or a space to just Relax! The features don't end there, this property offers In-Suite Laundry, and 1 Parking Stall. Move-in Ready! Amazing Location; close to ALL the Amenities including, shopping + NEW FRESN BROS, restaurants, walking-trails, Schools, Public Transportation, and the A. Henday. HEAT & WATER INCLUDED! Pet Friendly!

Built in 2007

Essential Information

MLS® #	E4434371
Price	\$269,000



Bedrooms	2
Bathrooms	2.00
Full Baths	2
Square Footage	1,302
Acres	0.00
Year Built	2007
Type	Condo / Townhouse
Sub-Type	Lowrise Apartment
Style	Multi Level Apartment
Status	Active

Community Information

Address	1316 7339 South Terwillegar Drive
Area	Edmonton
Subdivision	South Terwillegar
City	Edmonton
County	ALBERTA
Province	AB
Postal Code	T6R 0E1

Amenities

Amenities	Detectors Smoke, Parking-Plug-Ins, Parking-Visitor, Security Door
Parking	Stall

Interior

Interior Features	ensuite bathroom
Appliances	Dishwasher-Built-In, Hood Fan, Refrigerator, Stacked Washer/Dryer, Stove-Electric
Heating	Baseboard, Natural Gas
# of Stories	4
Stories	2
Has Basement	Yes
Basement	None, No Basement

Exterior

Exterior	Wood, Stone, Vinyl
Exterior Features	Airport Nearby, Golf Nearby, Playground Nearby, Public Transportation, Schools, Shopping Nearby
Roof	Asphalt Shingles

Construction	Wood, Stone, Vinyl
Foundation	Concrete Perimeter

Additional Information

Date Listed	May 3rd, 2025
Days on Market	3
Zoning	Zone 14
Condo Fee	\$588

DATA IS DEEMED RELIABLE BUT IS NOT GUARANTEED ACCURATE BY THE REALTORS® ASSOCIATION OF EDMONTON. COPYRIGHT 2025 BY THE REALTORS® ASSOCIATION OF EDMONTON. ALL RIGHTS RESERVED.Trademarks are owned or controlled by the Canadian Real Estate Association (CREA) and identify real estate professionals who are members of CREA (REALTOR®, REALTORS®) and/or the quality of services they provide (MLS®, Multiple Listing Service®)

Listing information last updated on May 6th, 2025 at 7:32pm MDT