

# \$274,314 - 12908 133 Street, Edmonton

MLS® #E4433588

**\$274,314**

4 Bedroom, 1.00 Bathroom, 999 sqft  
Single Family on 0.00 Acres

Athlone, Edmonton, AB

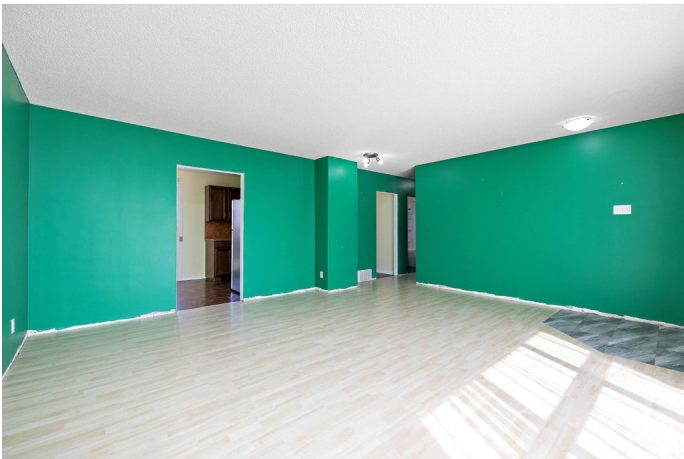
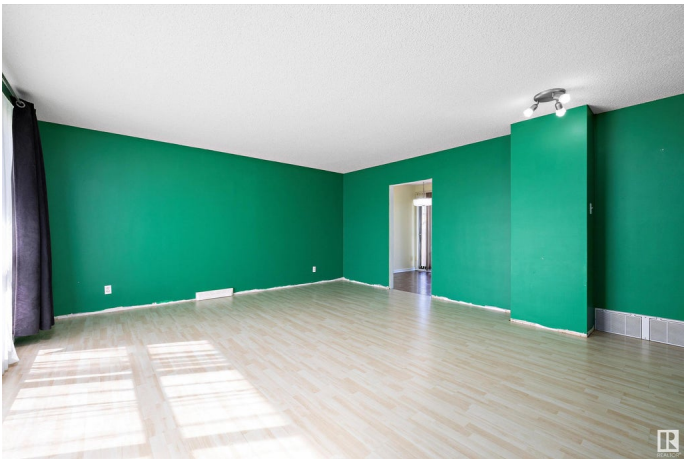
Charming 3+1 bedroom bungalow has newer shingles, with a huge yard and garage on a quiet residential family friendly street in Athlone. Main floor is the classic 3 bedroom plan with living room, kitchen, breakfast nook featuring sliding doors to backyard, full bath. Basement fully finished and That 70's Show dated, with huge family room, 4th bedroom with large window, storage areas and laundry room, and updated furnace and hot water tank. Ready for that handy family looking for some easy sweat equity!

Built in 1956

## Essential Information

MLS® #	E4433588
Price	\$274,314
Bedrooms	4
Bathrooms	1.00
Full Baths	1
Square Footage	999
Acres	0.00
Year Built	1956
Type	Single Family
Sub-Type	Detached Single Family
Style	Bungalow
Status	Active

## Community Information



Address	12908 133 Street
Area	Edmonton
Subdivision	Athlone
City	Edmonton
County	ALBERTA
Province	AB
Postal Code	T5L 1S8

### **Amenities**

Amenities	See Remarks
Parking Spaces	4
Parking	Single Garage Detached

### **Interior**

Appliances	Dishwasher-Built-In, Dryer, Refrigerator, Stove-Electric, Washer, Window Coverings
Heating	Forced Air-1, Natural Gas
Stories	2
Has Basement	Yes
Basement	Full, Finished

### **Exterior**

Exterior	Wood, Stucco
Exterior Features	See Remarks
Roof	Asphalt Shingles
Construction	Wood, Stucco
Foundation	Concrete Perimeter

### **Additional Information**

Date Listed	May 1st, 2025
Days on Market	2
Zoning	Zone 01

DATA IS DEEMED RELIABLE BUT IS NOT GUARANTEED ACCURATE BY THE REALTORS® ASSOCIATION OF EDMONTON. COPYRIGHT 2025 BY THE REALTORS® ASSOCIATION OF EDMONTON. ALL RIGHTS RESERVED.Trademarks are owned or controlled by the Canadian Real Estate Association (CREA) and identify real estate professionals who are members of CREA (REALTOR®, REALTORS®) and/or the quality of services they provide (MLS®, Multiple Listing Service®)

Listing information last updated on May 2nd, 2025 at 10:47pm MDT