

## \$1,295 - 14404 88a Street, Edmonton

MLS® #E4388457

**\$1,295**

2 Bedroom, 1.00 Bathroom, 866 sqft

Rental on 0.00 Acres

Evansdale, Edmonton, AB

Bright and Cheery One and Two Bedroom Apartments in Dickensfield. This Bright and Cheery apartment comes with two appliances, onsite laundry. Spacious living rooms with balconies and nice size bedrooms. Fantastic location! Walking Distance to Elementary and Junior High Schools. Close to Northgate Centre and Londonderry Mall. Immediate Possession !! Heat and Water included with Rent. The 1 beds are 701 SF and the 2 beds are 866 SF

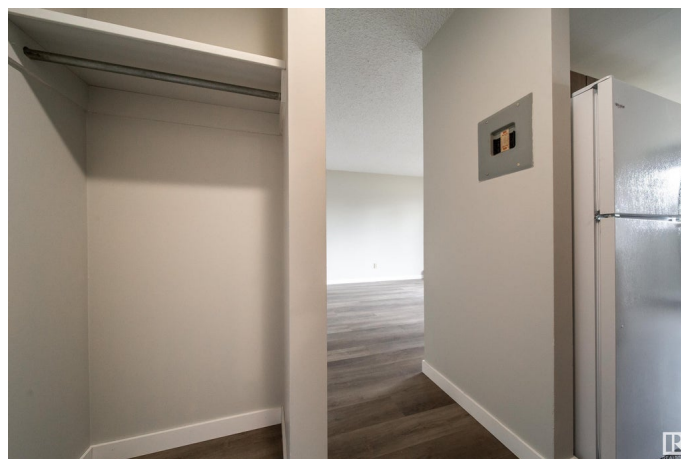
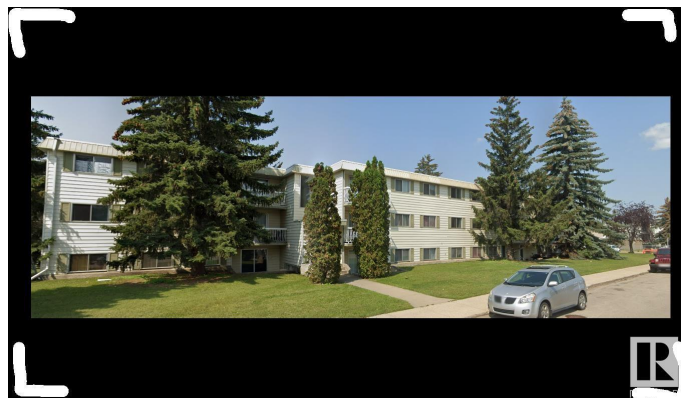
Built in 1977

### Essential Information

MLS® #	E4388457
Price	\$1,295
Bedrooms	2
Bathrooms	1.00
Full Baths	1
Square Footage	866
Acres	0.00
Year Built	1977
Type	Rental
Style	Single Level Apartment
Status	Active

### Community Information

Address 14404 88a Street



Area	Edmonton
Subdivision	Evansdale
City	Edmonton
County	ALBERTA
Province	AB
Postal Code	T5E 6C7

### **Amenities**

Parking	No Garage, Stall
---------	------------------

### **Interior**

Appliances	Refrigerator, Stove-Gas
------------	-------------------------

### **Additional Information**

Date Listed	May 18th, 2024
-------------	----------------

Days on Market	348
----------------	-----

Zoning	Zone 02
--------	---------

DATA IS DEEMED RELIABLE BUT IS NOT GUARANTEED ACCURATE BY THE REALTORS® ASSOCIATION OF EDMONTON. COPYRIGHT 2025 BY THE REALTORS® ASSOCIATION OF EDMONTON. ALL RIGHTS RESERVED. Trademarks are owned or controlled by the Canadian Real Estate Association (CREA) and identify real estate professionals who are members of CREA (REALTOR®, REALTORS®) and/or the quality of services they provide (MLS®, Multiple Listing Service®)

Listing information last updated on April 30th, 2025 at 11:02pm MDT